

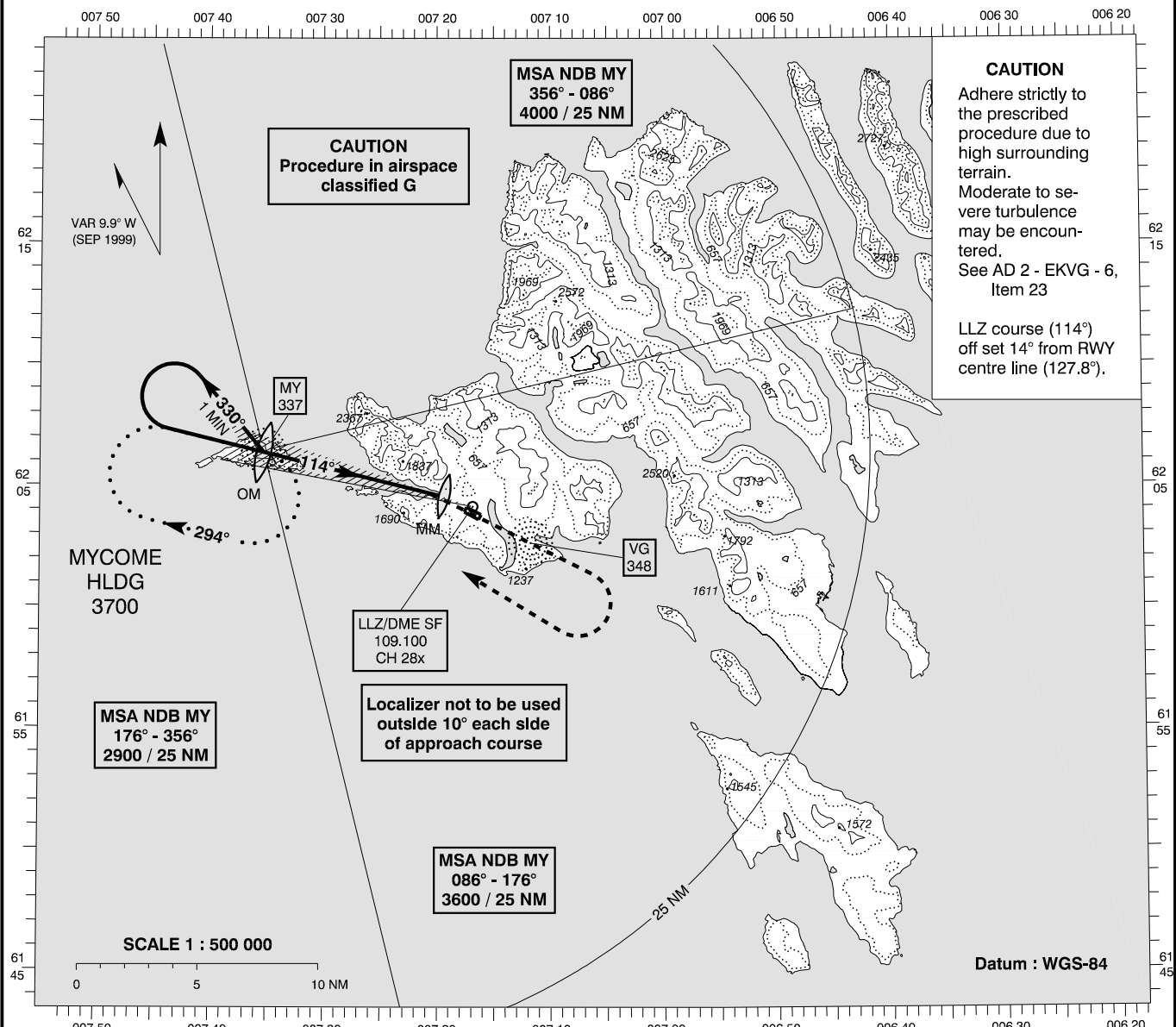
**INSTRUMENT
APPROACH
CHART - ICAO**

AD ELEV : 280

Bearings are magnetic
ELEV, ALT and HGT in FT

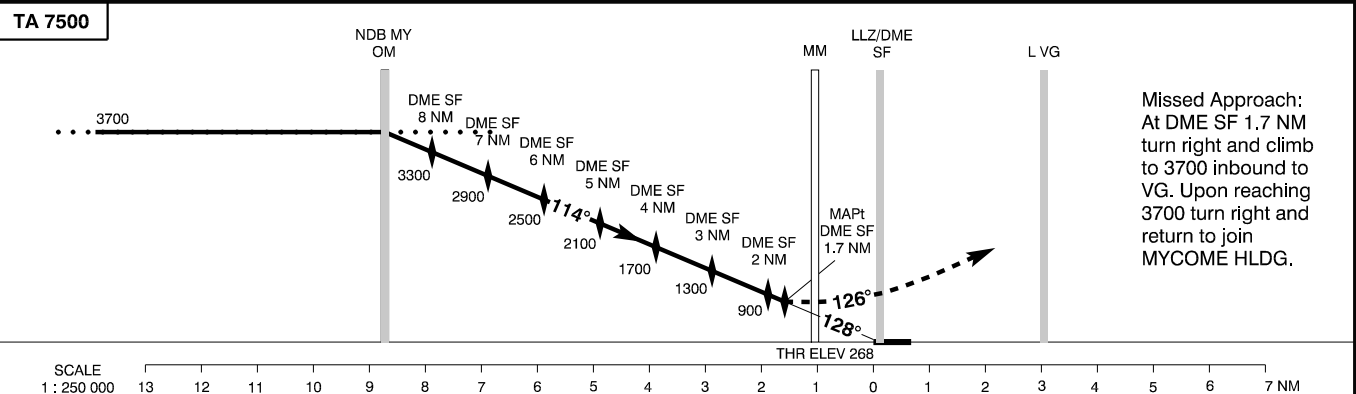
Vagar AFIS : 124.850

**AD 2 - EKVG
LLZ / DME 13
Vágar**



CAUTION
Adhere strictly to the prescribed procedure due to high surrounding terrain. Moderate to severe turbulence may be encountered. See AD 2 - EKVG - 6, Item 23

LLZ course (114°) off set 14° from RWY centre line (127.8°).



Missed Approach:
At DME SF 1.7 NM turn right and climb to 3700 inbound to VG. Upon reaching 3700 turn right and return to join MYCOME HLDG.

| | | | | | | | | | | | | | | | | | | | | | | |
|----------------------|----|----|----|----|---|---|---|---|---|---|---|---|---|---|---|---|---|---|---|---|---|----|
| SCALE 1 : 250 000 | 13 | 12 | 11 | 10 | 9 | 8 | 7 | 6 | 5 | 4 | 3 | 2 | 1 | 0 | 1 | 2 | 3 | 4 | 5 | 6 | 7 | NM |
|----------------------|----|----|----|----|---|---|---|---|---|---|---|---|---|---|---|---|---|---|---|---|---|----|

| | |
|-----|--------------------|
| OCL | SPECIAL CONDITIONS |
|-----|--------------------|

LLZ / DME * 820 * Pass DME SF 3.2 NM not below 1400.
Pass DME SF 2 NM not below 900.

State Minima : See AD 2 - EKVG - 5

Changes : Editorial