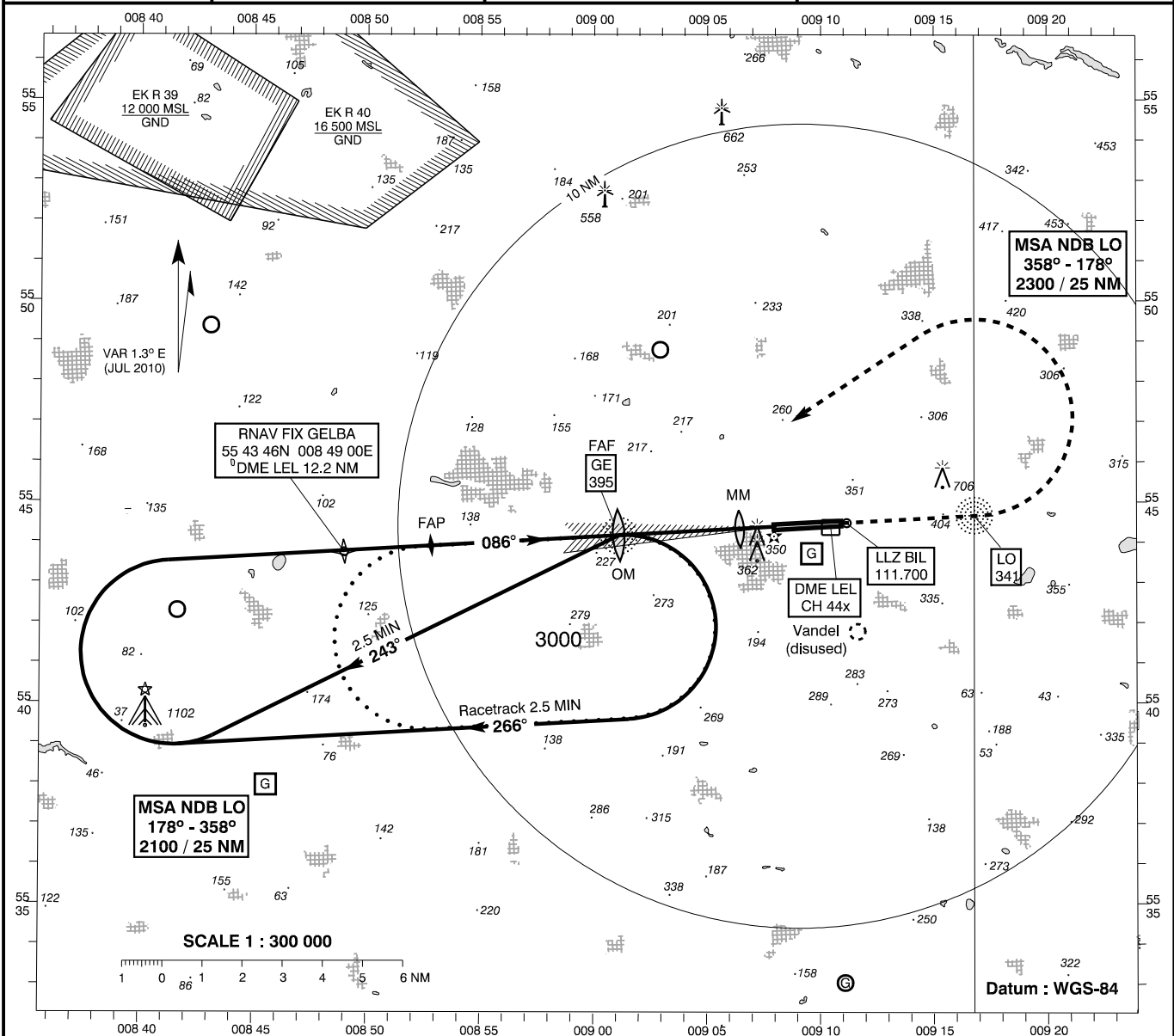


**INSTRUMENT APPROACH CHART - ICAO**

AD ELEV : 247  
 Bearings are magnetic  
 ELEV, ALT and HGT in FT

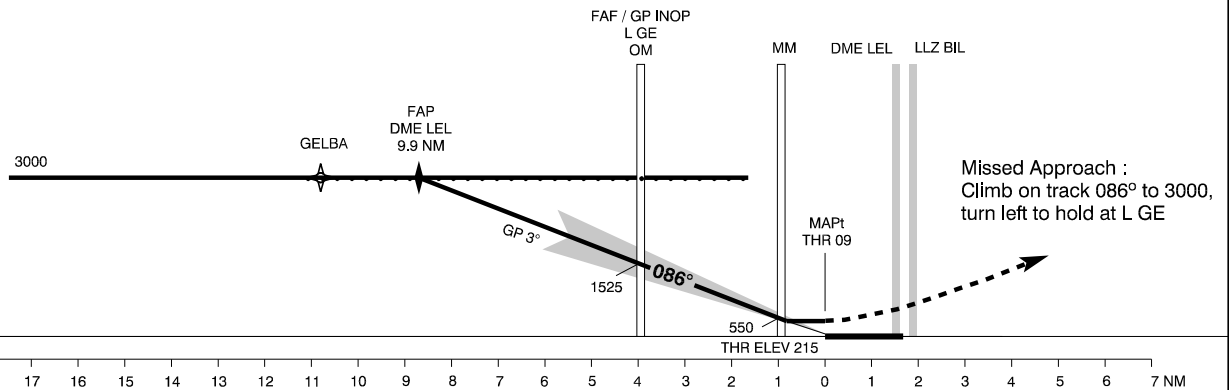
Billund APP : 127.575  
 Billund TWR : 119.000  
 ATIS : 118.775

**AD 2 - EKBI**  
**ILS 09 (CAT I + II + III)**  
**(ACFT CAT C / D)**  
**Billund**



**TA 3000**

**RDH 50**



OCA (H)	C	D
ILS CAT I	365 (150)	376 (161)
ILS CAT II	286 (71)	300 (85)
GP INOP *	500 (290)	500 (290)
Circling **	1130 (890)	1130 (890)

**SPECIAL CONDITIONS**

- \* Pass DME LEL 9.9 NM not below 3000.
- \* Pass FAF (OM / L GE) not below 1100.
- \* Pass MM not below 550.

\*\* N of AD only.

**CAT III operations may take place without restrictions as the basic ILS surfaces are not penetrated**

Time to THR 09 from L GE - DIST 3.95 NM									DME LEL	2	3	4	5	6	7	8	9	10
110 KT	120 KT	130 KT	140 KT	150 KT	160 KT	170 KT	180 KT	190 KT	DIST to THR	0.7	1.7	2.7	3.7	4.7	5.7	6.7	7.7	8.7
2:09	1:58	1:49	1:41	1:34	1:28	1:23	1:19	1:14	Nominal ALT	480	800	1115	1435	1755	2070	2400	2710	3030

Changes: VAR, Windturbine 662 FT added.