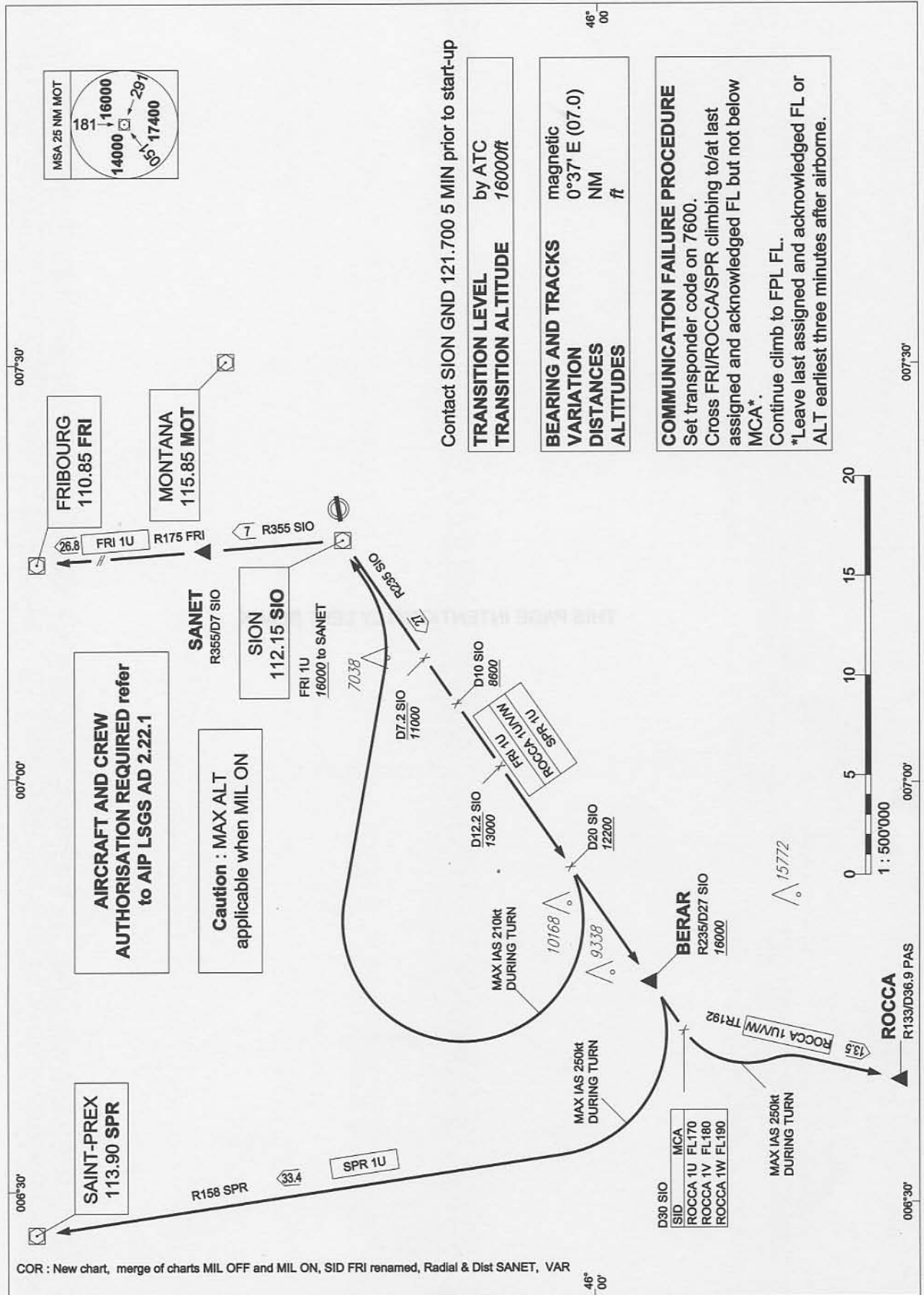


SID CHART ICAO

HIGH PERFORMANCE INSTRUMENT
DEPARTURE SID RWY 25

SION



Contact SION GND 121.700 5 MIN prior to start-up

TRANSITION LEVEL by ATC
TRANSITION ALTITUDE 16000ft

BEARING AND TRACKS magnetic
VARIATION 0°37' E (07.0)
DISTANCES NM
ALTITUDES ft

COMMUNICATION FAILURE PROCEDURE
Set transponder code on 7600.
Cross FRI/ROCCA/SPR climbing to/at last assigned and acknowledged FL but not below MCA*.
Continue climb to FPL FL.
*Leave last assigned and acknowledged FL or ALT earliest three minutes after airborne.

**AIRCRAFT AND CREW
AUTHORISATION REQUIRED refer
to AIP LSGS AD 2.22.1**

**Caution : MAX ALT
applicable when MIL ON**

COR : New chart, merge of charts MIL OFF and MIL ON, SID FRI renamed, Radial & Dist SANET, VAR



THIS PAGE INTENTIONALLY LEFT BLANK

SID HIGH PERFORMANCE RWY 25**GENERAL INFORMATION FOR ALL SIDs**

- MAX ALT applicable when MIL ON
- Contact SION GND 121.700 5 MIN prior to start-up
- INITIAL CLIMB CLEARANCE: BY ATC

FRIBOURG ONE UNIFORM DEPARTURE (FRI 1U) – MIL OFF only

PROCEDURE DESIGN GRADIENT (PDG) 13.4 % to 8100ft, 4.8 % to 12300ft

Climb on TR242, intercept R235 SIO. At D20 SIO or 13000ft, whichever is earlier, turn right (MAX IAS 210KT during turn) and establish TR100 to intercept R235 SIO INBD to SIO. Proceed via SIO and SANET to FRI. Cross SIO MNM 16000ft.

ROCCA ONE UNIFORM/VICTOR/WHISKY DEPARTURE (ROCCA 1U/VW)

PROCEDURE DESIGN GRADIENT (PDG) 13.4 % to 8100ft, 4.8 % to 12300ft

Climb on TR242, intercept R235 SIO. Proceed via BERAR to D30 SIO. At D30 SIO turn left (MAX IAS 250KT during turn), establish TR192, proceed to ROCCA.

Caution :

Cross D7.2 SIO MAX 11000ft,
D10 SIO MNM 8600ft,
D12.2 SIO MAX 13000ft,
D20 SIO MNM 12200ft,
BERAR MNM 16000ft,
D30 SIO MNM FL according chart.

SAINT-PREX ONE UNIFORM DEPARTURE (SPR 1U)

PROCEDURE DESIGN GRADIENT (PDG) 13.4 % to 8100ft, 4.8 % to 12300ft

Climb on TR242, intercept R235 SIO. Proceed to BERAR. At BERAR turn right (MAX IAS 250KT during turn), intercept R158 SPR, proceed to SPR.

Caution :

Cross D7.2 SIO MAX 11000ft,
D10 SIO MNM 8600ft,
D12.2 SIO MAX 13000ft,
D20 SIO MNM 12200ft,
BERAR MNM 16000ft.

COMMUNICATION FAILURE PROCEDURE FOR ALL SIDs

- Set transponder on code 7600.
 - Cross FRI/ROCCA/SPR climbing to/at assigned and acknowledged FL but not below MCA*.
 - Continue climb to FPL FL.
- * Leave last assigned and acknowledged FL or ALT earliest three minutes after airborne.

THIS PAGE INTENTIONALLY LEFT BLANK