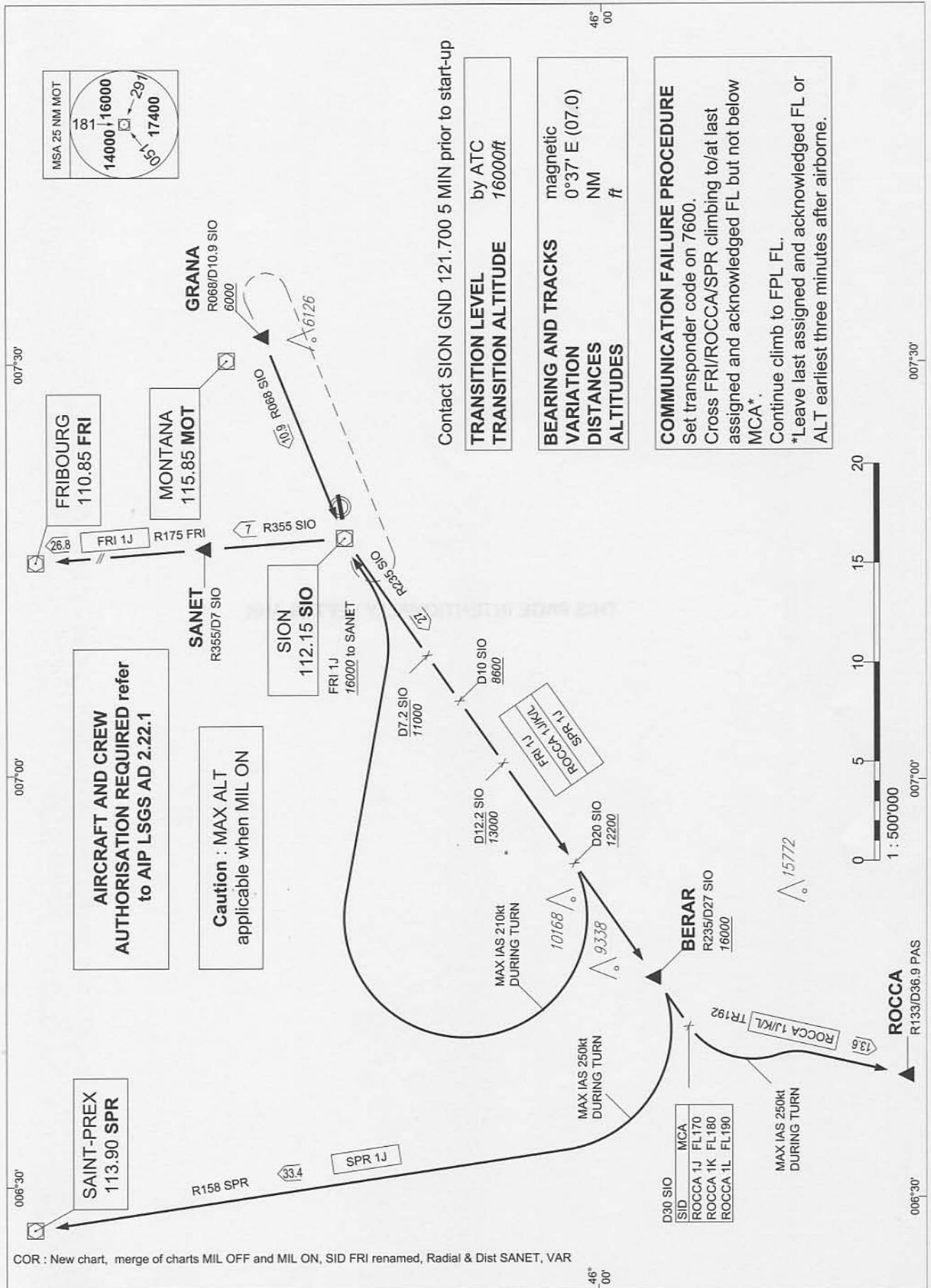


SID CHART ICAO

STANDARD INSTRUMENT
DEPARTURE SID RWY 07/25

SION



COR : New chart, merge of charts MIL OFF and MIL ON, SID FRI renamed, Radial & Dist SANET, VAR



THIS PAGE INTENTIONALLY LEFT BLANK

SID RWY 07/25**GENERAL INFORMATION FOR ALL SIDs**

MAX ALT applicable when MIL ON

Contact SION GND 121.700 5 MIN prior to start-up

INITIAL CLIMB CLEARANCE: BY ATC

FRIBOURG ONE JULIET DEPARTURE (FRI 1J) – MIL OFF only

PROCEDURE DESIGN GRADIENT (PDG) 4.2 % to 6300ft

Proceed to GRANA (large factory, south of Sierre) maintaining visual ground contact. Arrange your visual climb to pass GRANA at 6000ft or above, established on R068 SIO (TR248) to SIO. Proceed to SIO. At SIO, intercept R235 SIO. At D20 SIO or 13000ft, whichever is earlier, turn right (MAX IAS 210KT during turn) and establish TR100 to intercept R235 SIO INBD to SIO. Proceed via SIO and SANET to FRI. Cross SIO MNM 16000ft.

ROCCA ONE JULIET/KILO/LIMA DEPARTURE (ROCCA 1J/K/L)

PROCEDURE DESIGN GRADIENT (PDG) 4.2 % to 15400ft

Proceed to GRANA (large factory, south of Sierre) maintaining visual ground contact. Arrange your visual climb to pass GRANA at 6000ft or above, established on R068 SIO (TR248) to SIO. At SIO intercept R235 SIO, proceed via BERAR to D30SIO. At D 30 SIO turn left (MAX IAS 250KT during turn), establish TR192, proceed to ROCCA.

Caution :

Cross D7.2 SIO MAX 11000ft,
D10 SIO MNM 8600ft,
D12.2 SIO MAX 13000ft,
D20 SIO MNM 12200ft,
BERAR MNM 16000ft,
D30 SIO MNM FL according chart.

SAINT-PREX ONE JULIET DEPARTURE (SPR 1J)

PROCEDURE DESIGN GRADIENT (PDG) 4.2 % to 6300ft

Proceed to GRANA (large factory, south of Sierre) maintaining visual ground contact. Arrange your visual climb to pass GRANA at 6000ft or above, established on R068 SIO (TR248) to SIO. At SIO intercept R235 SIO, proceed to BERAR. At BERAR turn right (MAX IAS 250KT during turn), intercept R158 SPR, proceed to SPR.

Caution :

Cross D7.2 SIO MAX 11000ft,
D10 SIO MNM 8600ft,
D12.2 SIO MAX 13000ft,
D20 SIO MNM 12200ft,
BERAR MNM 16000ft.

COMMUNICATION FAILURE PROCEDURE FOR ALL SIDs

Set transponder on code 7600.

Cross FRI/ROCCA/SPR climbing to/at assigned and acknowledged FL but not below MCA*.

Continue climb to FPL FL.

* Leave last assigned and acknowledged FL or ALT earliest three minutes after airborne

THIS PAGE INTENTIONALLY LEFT BLANK