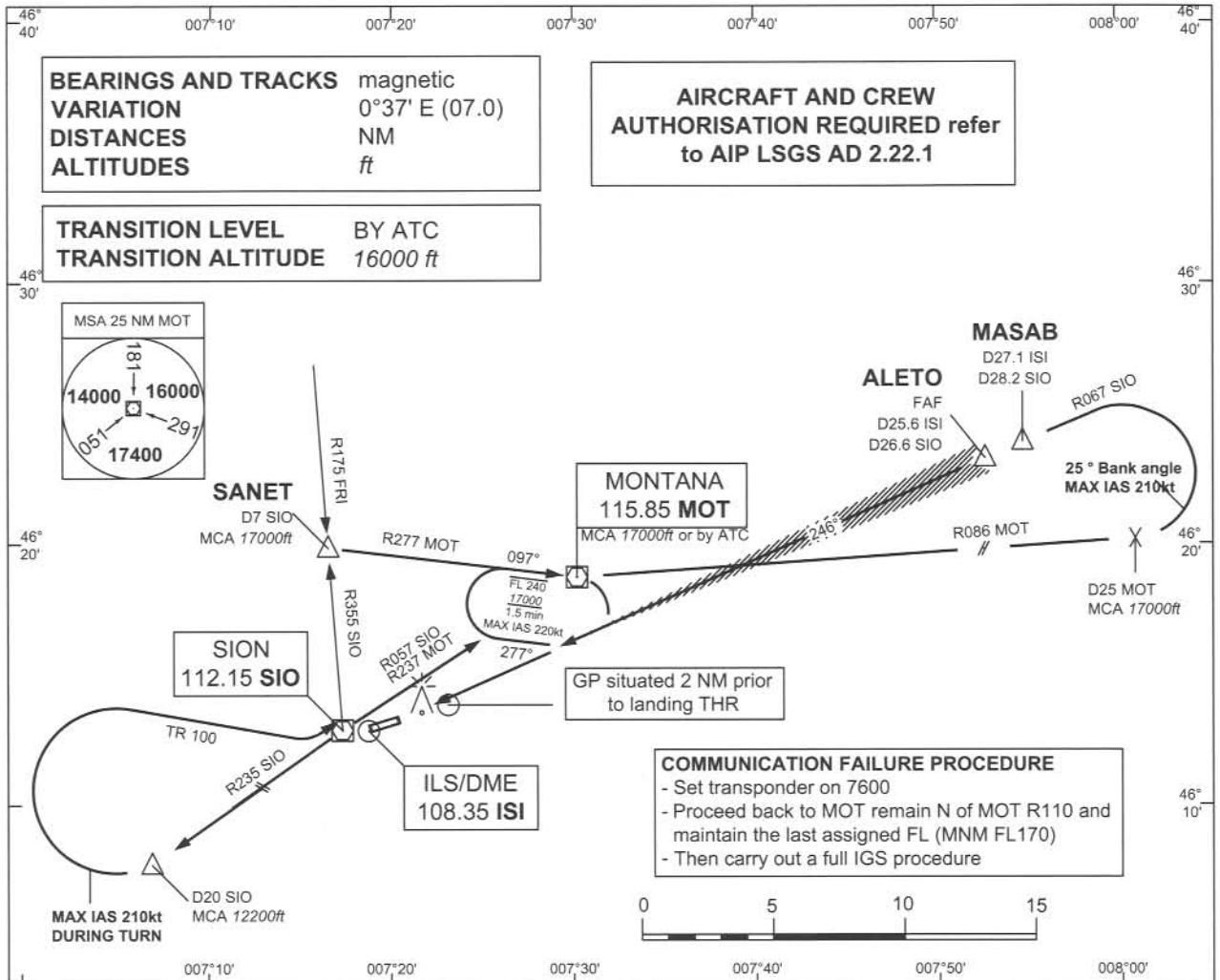


INSTRUMENT  
APPROACH  
CHART  
ICAO

ELEV 1581ft

RADAR	Swiss MIL	130.625	
RADAR	Sion	126.825	122.350
TWR	Sion	118.275	
GND	Sion	121.700	

**SION**  
IGS RWY 25 (CAT A/B/C)  
(IGS instruction: see LSGS AD 2.22)  
STEEP APPROACH 6°



**SIO VOR/DME**

**ALETO MASAB** D25.6 ISI D27.1 ISI 16000 D26.6 SIO D28.2 SIO

13100 11519 6° (10.51%) 14419 17000 15419

9900 8319 246°

6100 4519

TR246

ELEV 1581ft

THR RWY 25 NM DME ISI

2 1 0 1 2 3 4 5 6 7 8 9 10 11 12 13 14 15 16 17 18 19 20 21 22 23 24 25 26 27 28 29

**MISSED APPROACH**

Climb initially on LOC course 246°. At D7 ISI proceed on TR246. When passing D5.5 SIO intercept R070 SIO to SIO. Leave SIO on R235, at D20 SIO turn right (max IAS 210kt during turn), establish TR100 to intercept R235 SIO INBD SIO. Proceed via SIO to MOT. Climb to 17000ft. Cross D20 SIO at 12200ft or above. MOT at 17000ft.

DA / H	Missed APCH climb gradient	A	B	C	VIS
Straight-in approach RWY25	2.5%	6020 ft / <sup>1)</sup> 4439 ft	6050 ft / <sup>1)</sup> 4469 ft	6080 ft / <sup>1)</sup> 4499 ft	5 km
	3.0%	5320 ft / <sup>1)</sup> 3739 ft	5350 ft / <sup>1)</sup> 3769 ft	5380 ft / <sup>1)</sup> 3799 ft	5 km
	3.5%	4670 ft / <sup>1)</sup> 3089 ft	4710 ft / <sup>1)</sup> 3129 ft	4740 ft / <sup>1)</sup> 3159 ft	5 km
Circling RWY07 north of AD only	<sup>1) 2)</sup> A = 3700	B = 5400 (MAX IAS 125 kt)	C = Prohibited		
	VIS 5 km	VIS 5 km			

General notes: - APCH PROHIBITED IF GP U/S

- Table for temperature deviation from ISA, see LSGS AD 2.23.2
- Final approach offset 7" from RWY centreline
- If unable to comply with MNM HLDG speed, inform ATC

Table notes: 1) Special training required

2) Night circling prohibited

COR : DA/H minor modifications

THIS PAGE INTENTIONALLY LEFT BLANK