

GCLP/LPA GRAN CANARIA, CANARY IS  
GRAN CANARIA 22 DEC 06 (10-1P) AIRPORT BRIEFING

## 1. GENERAL

### 1.1. ATIS

ATIS 118.6

### 1.2. LOW VISIBILITY PROCEDURES (LVP)

#### 1.2.1. GENERAL

LVP will be applied when the meteorological minimum will be 600m or below.  
Tower will inform pilots about application of LVP via ATIS.

Tower will also inform pilots, when visibility is above 1000m and there is a strong improvement tendency of meteorological conditions, the cancellation of LVP.

#### 1.2.2. EXITS/ENTRIES OF RWY

When RWYs 03L and 03R are in service, the entry to the RWY will be only authorized via TWY R1. TWYs S1, S2, S5 and S6 will be closed.

When RWYs 21L and 21R are in service, the entry to the RWY will be only authorized via TWY R9. TWYs S2, S3, S5 and S6 will be closed.

#### 1.2.3. GROUND MOVEMENT

Pilots will proceed to verify at every moment the ACFT position, checking that taxiing is being executed under total safety conditions. In case of being disoriented or in doubt, pilots will stop ACFT and immediately will notify Tower.

Usually, when LVP are in force, Tower will only clear the movement of one ACFT at the same time.

#### 1.2.4. DESCRIPTION

In order to establish a better traffic sequence, pilots will avoid requesting clearance for start-up, push-back or taxiing when RVR or visibility are below their own operational minimum.

With a RVR or visibility lower than 150m, and in the case the centerline lighting is out of service, ACFT will taxi with guidance of a Follow-me car.

#### 1.2.5. COMMUNICATION FAILURE

Whenever an ACFT in the manoeuvring area experiences a communications failure, it will comply with the following procedure:

Departing ACFT will continue via the assigned route to its ATC clearance limit taking extreme caution. Once at this point, ACFT must hold position and wait for the arrival of a Follow-me car in order to be guided to the assigned stand position or holding bay.

### 1.3. OTHER INFORMATION

Area of magnetic abnormality.  
RWYs 03L and 03R right-hand circuit.

GCLP/LPA GRAN CANARIA, CANARY IS  
GRAN CANARIA 22 DEC 06 (10-1P) AIRPORT BRIEFING

## 2. ARRIVAL

### 2.1. SPEED RESTRICTIONS

MAX 250 KT at or below FL 150 after SLP.

### 2.2. OTHER INFORMATION

#### 2.2.1. LANDING CLEARANCE BASED ON ANTICIPATED SEPARATION

Although the RWY is temporarily occupied by other traffic, landing clearance may be issued to an arriving ACFT if the controller is satisfied that at the time the ACFT crosses the THR of the RWY in use, prescribed separation from the preceding ACFT will exist.

When issuing a 'Landing Clearance based on Anticipated Separation', ATC shall issue clearance to the succeeding ACFT with the following instructions:

'...(Call sign) BEHIND LANDING/DEPARTING (ACFT type) CLEARED TO LAND RUNWAY (number)'

This procedure may be used between sunrise and sunset.

## 3. DEPARTURE

### 3.1. START-UP, PUSH-BACK & TAXI PROCEDURES

#### 3.1.1. START-UP

ACFT must be ready to start-up before calling on the appropriate frequency 125.0 between 0800-1500LT or Ground otherwise.

On requesting start-up clearance, pilots will report to ATC the complete ACFT call sign, ACFT type and series, parking position occupied and the ATIS message received.

Clearance will be issued as soon as requested. When delays are expected to exceed 15 minutes, ATC will provide the appropriate engine start-up time.

Once engine start-up clearance or expected time has been provided, GRAN CANARIA Clearances will issue the corresponding ATC clearance.

#### 3.1.2. PUSH-BACK & TAXIING

ACFT must be ready for towed push-back or taxiing within the next 5 minutes to the approved start-up time, pilots will contact ATC if otherwise.

In all stand positions with autonomous exit, the exit manoeuvre will be carried out at the minimum regime to initiate taxiing.

All ACFT will observe ATC instructions to reach the holding point of the RWY or RWYs in use.

ACFT when vacating RWY will report the ATC, where GMC will inform their parking position and any further instruction if required to reach the stand.

ATC clearances and instructions must be completely read back.

### 3.2. RUNWAY OPERATIONS

#### 3.2.1. MINIMUM RWY OCCUPANCY TIME

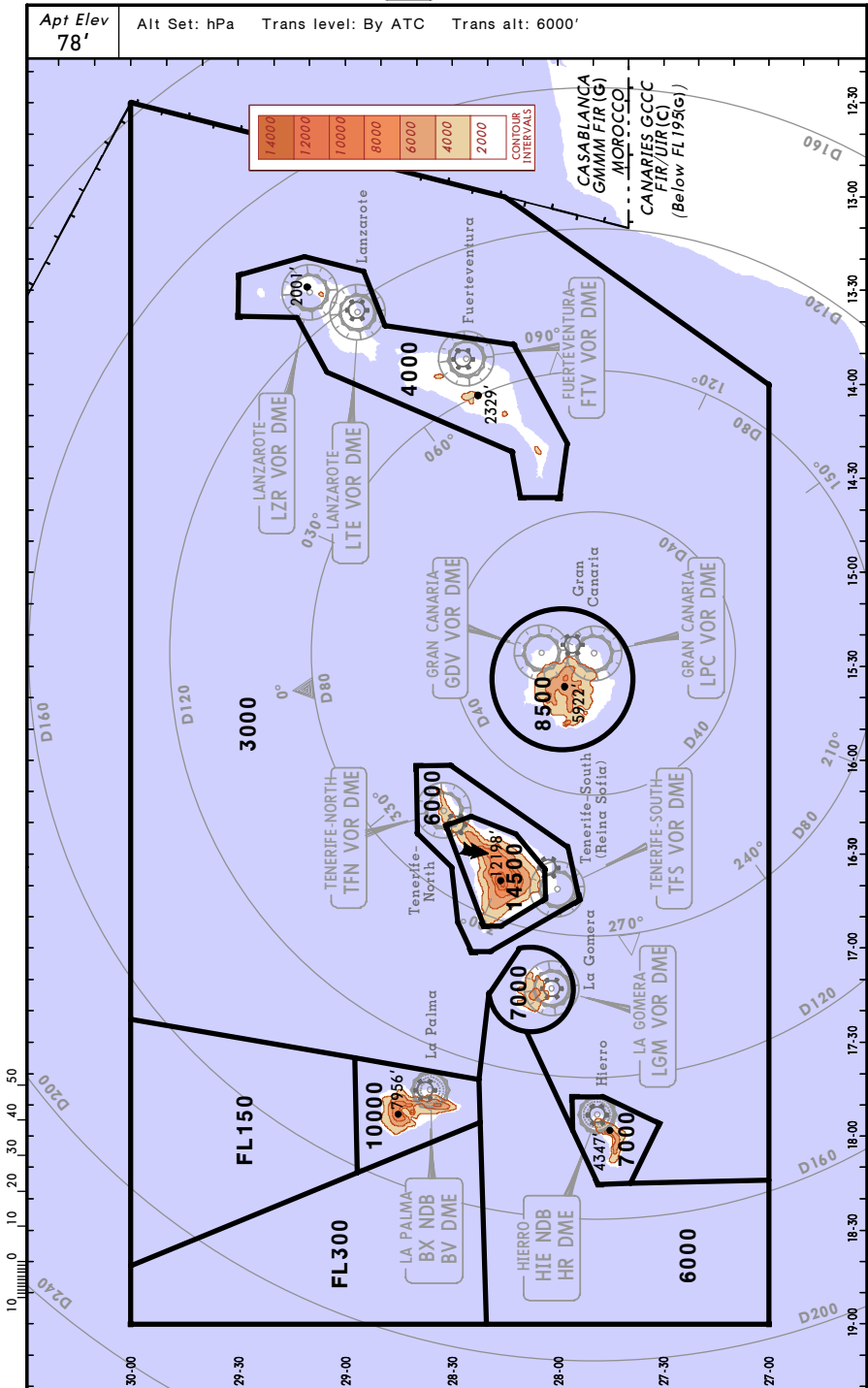
All ACFT reaching the holding point of RWY in use must have made their previous checks and will be totally ready to line up on the RWY and to start the take-off rolling immediately after the clearance is issued.

GCLP/LPA  
 GRAN CANARIA

JEPPESEN GRAN CANARIA, CANARY IS

26 OCT 07 (10-1R)

RADAR MINIMUM ALTITUDES

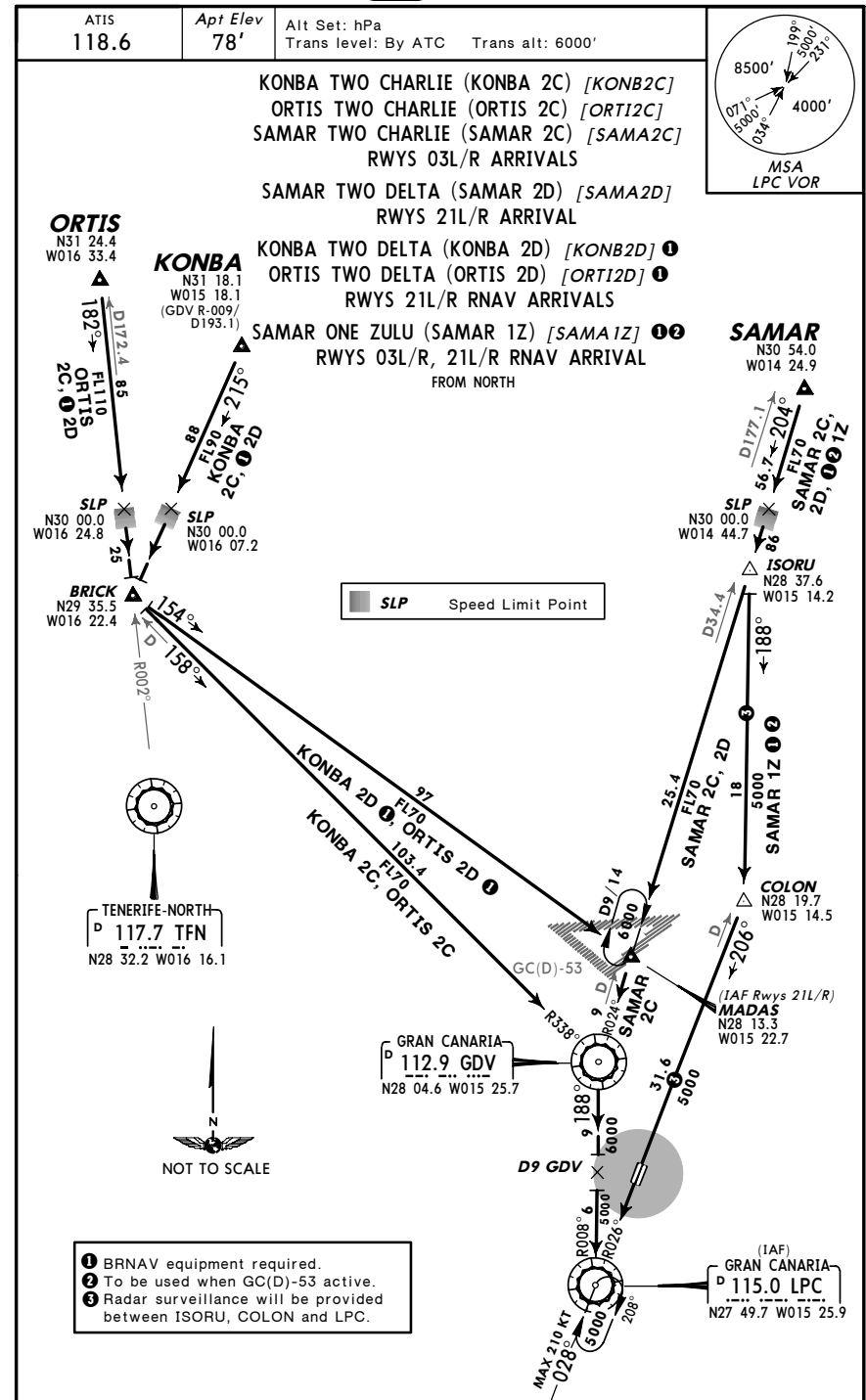


GCLP/LPA  
 GRAN CANARIA

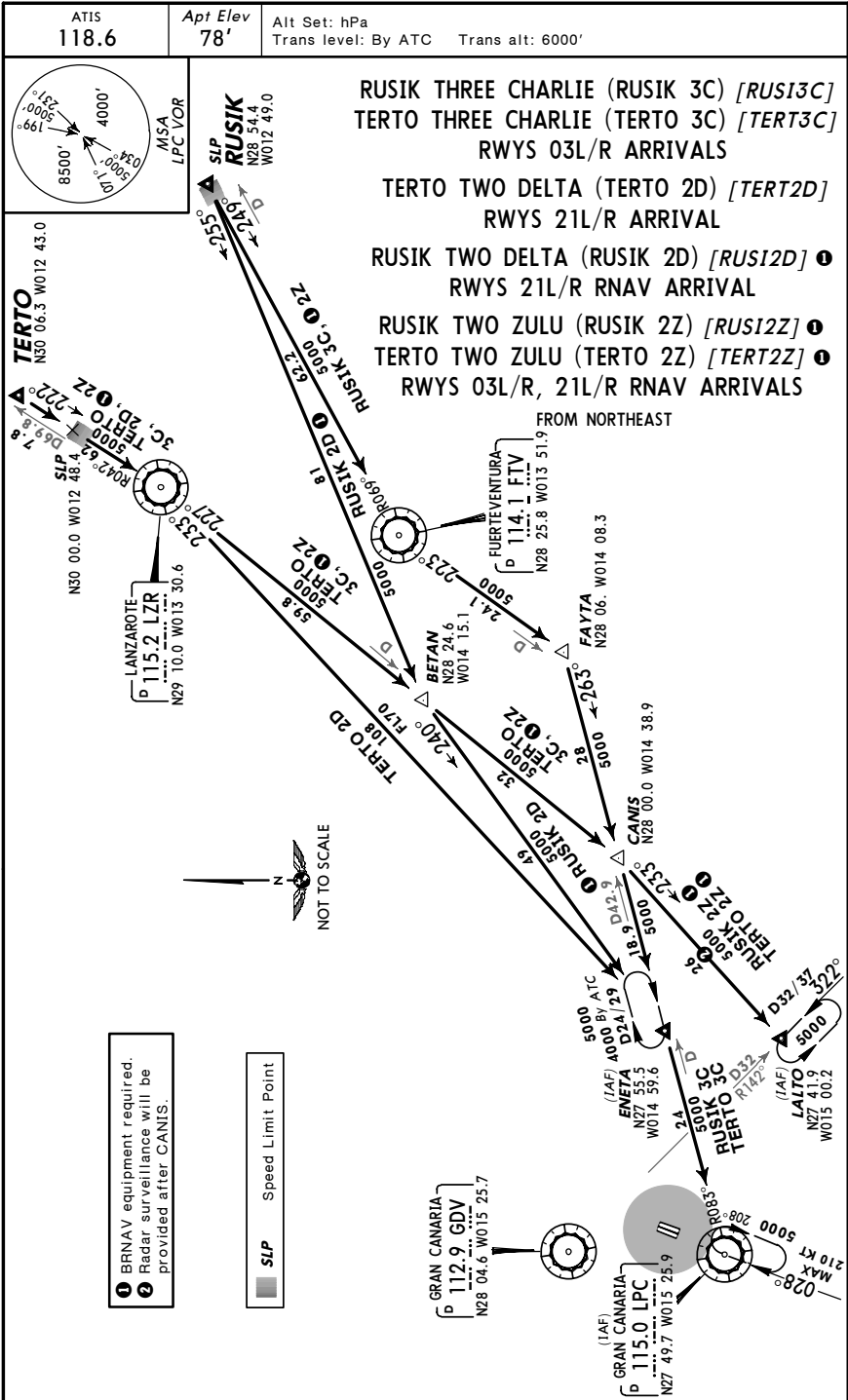
JEPPESEN GRAN CANARIA, CANARY IS

26 OCT 07 (10-2)

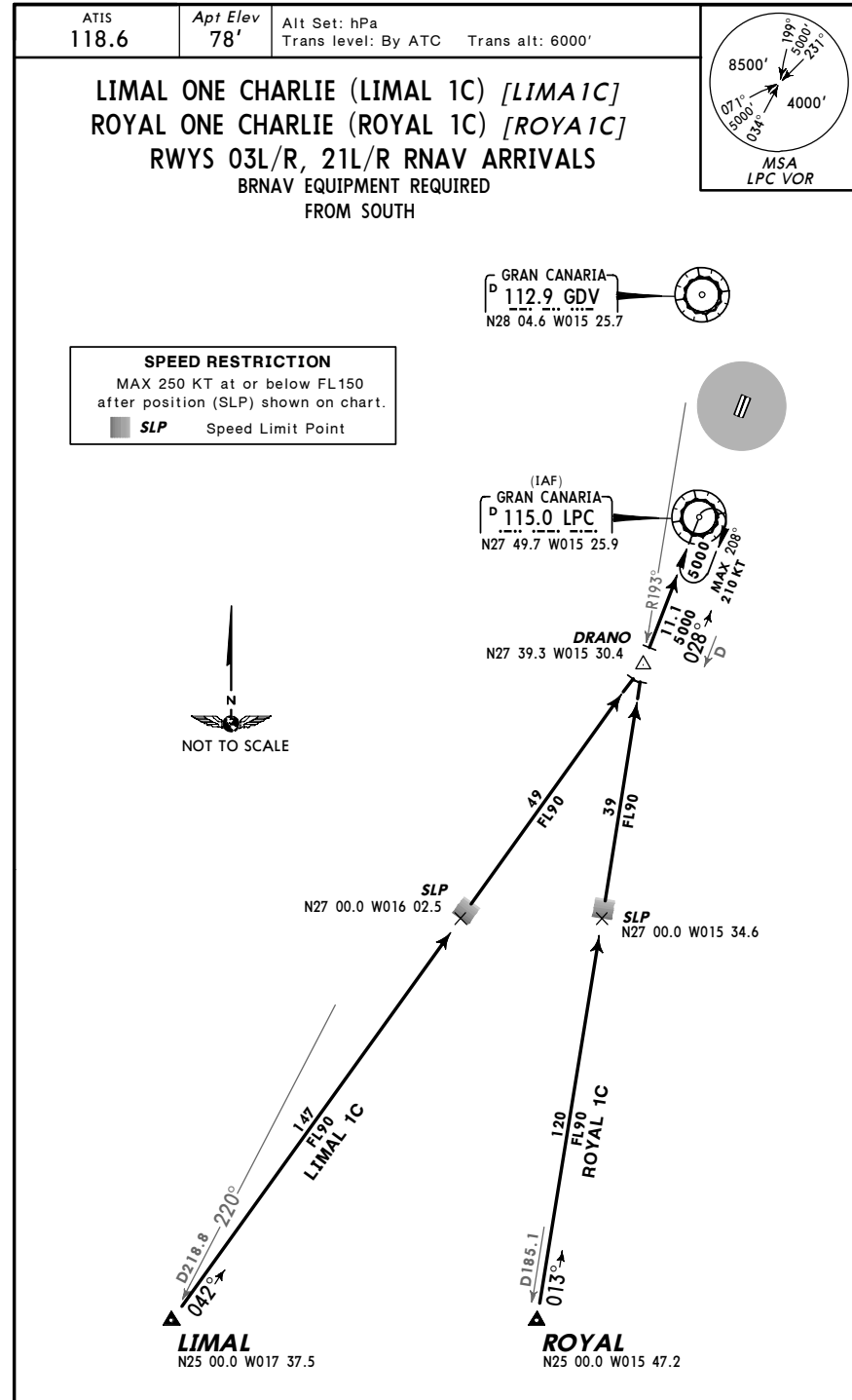
STAR



**GCLP/LPA GRAN CANARIA** 26 OCT 07 **(10-2A)** **STAR**



**GCLP/LPA GRAN CANARIA** 14 APR 06 **(10-2B)** **STAR**

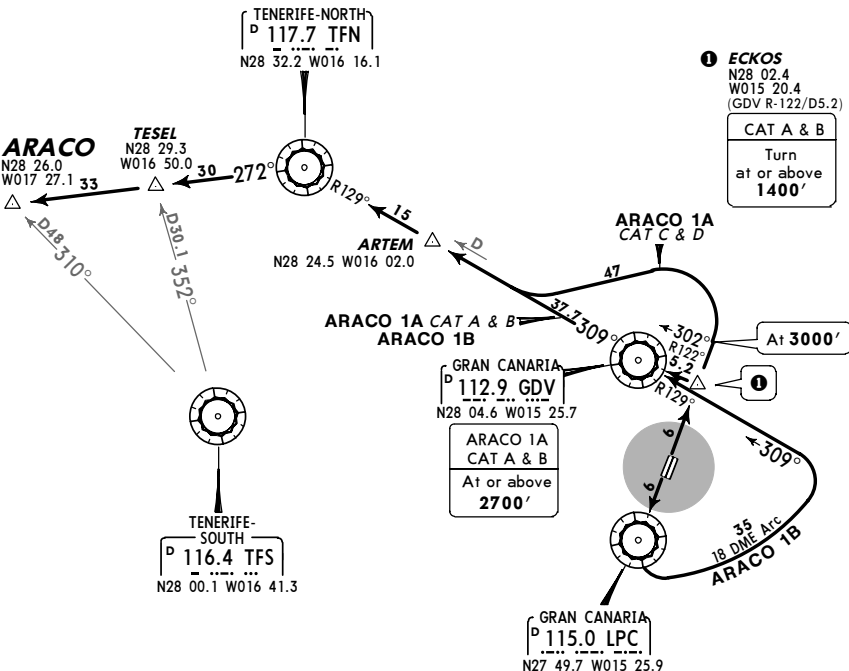


GCLP/LPA  
 GRAN CANARIA

JEPPESEN GRAN CANARIA, CANARY IS  
 19 SEP 03 (10-3) Eff 2 Oct SID

Apt Elev 78' Trans level: By ATC Trans alt: 6000'

**ARACO ONE ALFA (ARACO 1A) [ARAC1A]**  
**ARACO ONE BRAVO (ARACO 1B) [ARAC1B]**  
 RWYS 03L/R, 21R/L DEPARTURES



These SIDs require minimum climb gradients of

**ARACO 1A (CAT A & B)**  
 243' per NM (4%) until leaving 2700'.  
**ARACO 1B**  
 304' per NM (5%) until leaving 1300'.

Gnd speed-KT	75	100	150	200	250	300
243' per NM	304	405	608	810	1013	1215
304' per NM	380	506	760	1013	1266	1519

SID	RWY	INITIAL CLIMB
ARACO 1A	03L	To ECKOS.
	03R	Turn LEFT in VMC, then to ECKOS.
ARACO 1B	21R	To LPC.
	21L	Turn RIGHT in VMC, then to LPC.

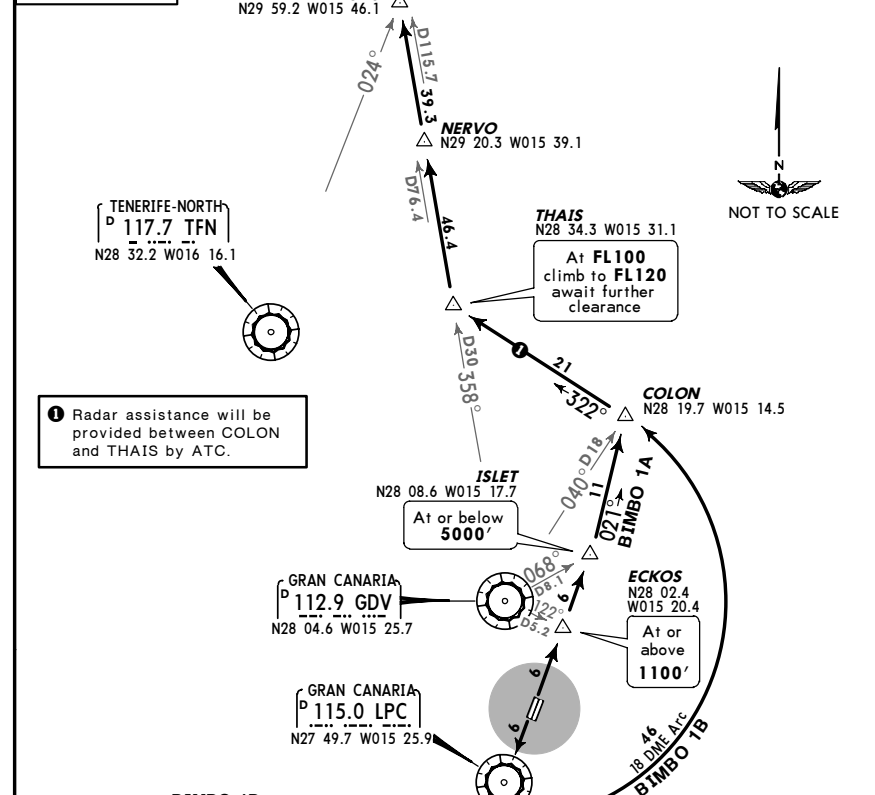
SID	ROUTING
ARACO 1A	<b>CAT A &amp; B:</b> At ECKOS turn LEFT to GDV, GDV R-309 via ARTEM to TFN, TFN R-272 via TESEL to ARACO. Maintain 6000', await further clearance. <b>CAT C &amp; D:</b> At ECKOS continue climb to 3000', turn LEFT, intercept GDV R-309 via ARTEM to TFN, TFN R-272 via TESEL to ARACO. Maintain 6000', await further clearance.
ARACO 1B	At LPC turn LEFT, along GDV 18 DME arc, intercept GDV R-129 inbound to GDV, GDV R-309 via ARTEM to TFN, TFN R-272 via TESEL to ARACO. Maintain 6000', await further clearance.

GCLP/LPA  
 GRAN CANARIA

JEPPESEN GRAN CANARIA, CANARY IS  
 19 SEP 03 (10-3A) Eff 2 Oct SID

Apt Elev 78' Trans level: By ATC Trans alt: 6000'

**BIMBO ONE ALFA (BIMBO 1A) [BIMB1A]**  
**BIMBO ONE BRAVO (BIMBO 1B) [BIMB1B]**  
 RWYS 03L/R, 21R/L RNAV DEPARTURES  
 BRNAV EQUIPMENT REQUIRED



**BIMBO 1B**  
 This SID requires a minimum climb gradient of 304' per NM (5%) until leaving 1300'.

Gnd speed-KT	75	100	150	200	250	300
304' per NM	380	506	760	1013	1266	1519

SID	RWY	INITIAL CLIMB
BIMBO 1A	03L	To ECKOS.
	03R	Turn LEFT in VMC, then to ECKOS.
BIMBO 1B	21R	To LPC.
	21L	Turn RIGHT in VMC, then to LPC.

SID	ROUTING
BIMBO 1A	From ECKOS to ISLET, then to COLON, turn LEFT, 322° track to THAIS, turn RIGHT, maintain FL100 until intercepting GDV R-358, climb to FL120, await further clearance, proceed via NERVO and KASAS to BIMBO.
BIMBO 1B	At LPC turn LEFT, along GDV 18 DME arc to COLON, turn LEFT, 322° track to THAIS, turn RIGHT, maintain FL100 until intercepting GDV R-358, climb to FL120, await further clearance, proceed via NERVO and KASAS to BIMBO.

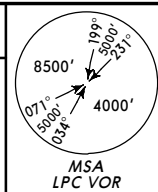
GCLP/LPA  
 GRAN CANARIA

JEPPESEN GRAN CANARIA, CANARY IS

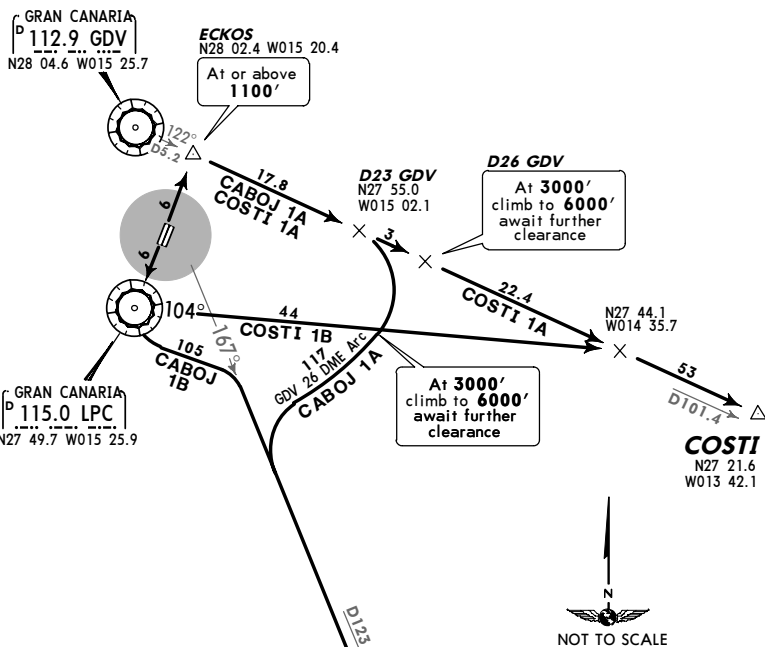
22 JUL 05 (10-3B) Eff 4 Aug

SID

Apt Elev 78' Trans level: By ATC Trans alt: 6000'



CABOJ ONE ALFA (CABOJ 1A)[CABO1A]  
 CABOJ ONE BRAVO (CABOJ 1B)[CABO1B]  
 COSTI ONE ALFA (COSTI 1A)[COST1A]  
 COSTI ONE BRAVO (COSTI 1B)[COST1B]  
 RWYS 03L/R, 21R/L DEPARTURES



**CABOJ 1B, COSTI 1B**  
 These SIDs require a minimum climb gradient of 304' per NM (5%) until leaving 1300'.

Gnd speed-KT	75	100	150	200	250	300
304' per NM	380	506	760	1013	1266	1519

SID	RWY	INITIAL CLIMB
CABOJ 1A	03L	To ECKOS.
COSTI 1A	03R	Turn LEFT in VMC, then to ECKOS.
CABOJ 1B	21R	To LPC.
COSTI 1B	21L	Turn RIGHT in VMC, then to LPC.

SID	ROUTING
CABOJ 1A	At ECKOS turn RIGHT, intercept GDV R-122 to D23 GDV, turn RIGHT, maintain 3000' until intercepting GDV 26 DME arc, climb to 6000', await further clearance, along arc, intercept GDV R-167 to CABOJ.
CABOJ 1B	At LPC turn LEFT, intercept GDV R-167 to CABOJ. Maintain 6000', await further clearance.
COSTI 1A	At ECKOS turn RIGHT, intercept GDV R-122, maintain 3000' until D26 GDV, climb to 6000', await further clearance, proceed to COSTI.
COSTI 1B	At LPC, LPC R-104, intercept GDV R-122 to COSTI. Maintain 6000', await further clearance.

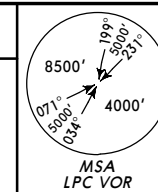
GCLP/LPA  
 GRAN CANARIA

JEPPESEN GRAN CANARIA, CANARY IS

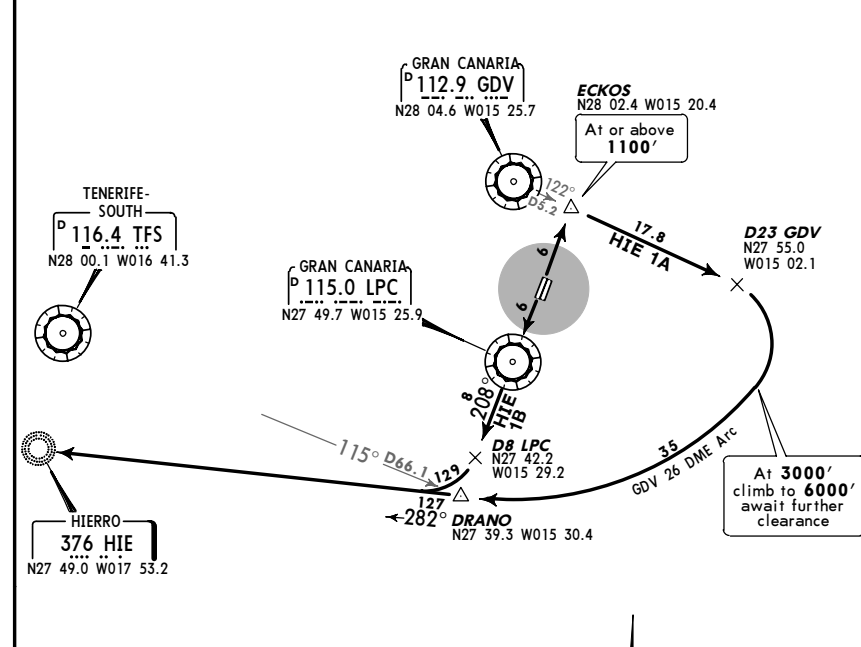
22 JUL 05 (10-3C) Eff 4 Aug

SID

Apt Elev 78' Trans level: By ATC Trans alt: 6000'



HIERRO ONE ALFA (HIE 1A)  
 HIERRO ONE BRAVO (HIE 1B)  
 RWYS 03L/R, 21R/L DEPARTURES



**HIE 1B**  
 This SID requires a minimum climb gradient of 304' per NM (5%) until leaving 1300'.

Gnd speed-KT	75	100	150	200	250	300
304' per NM	380	506	760	1013	1266	1519

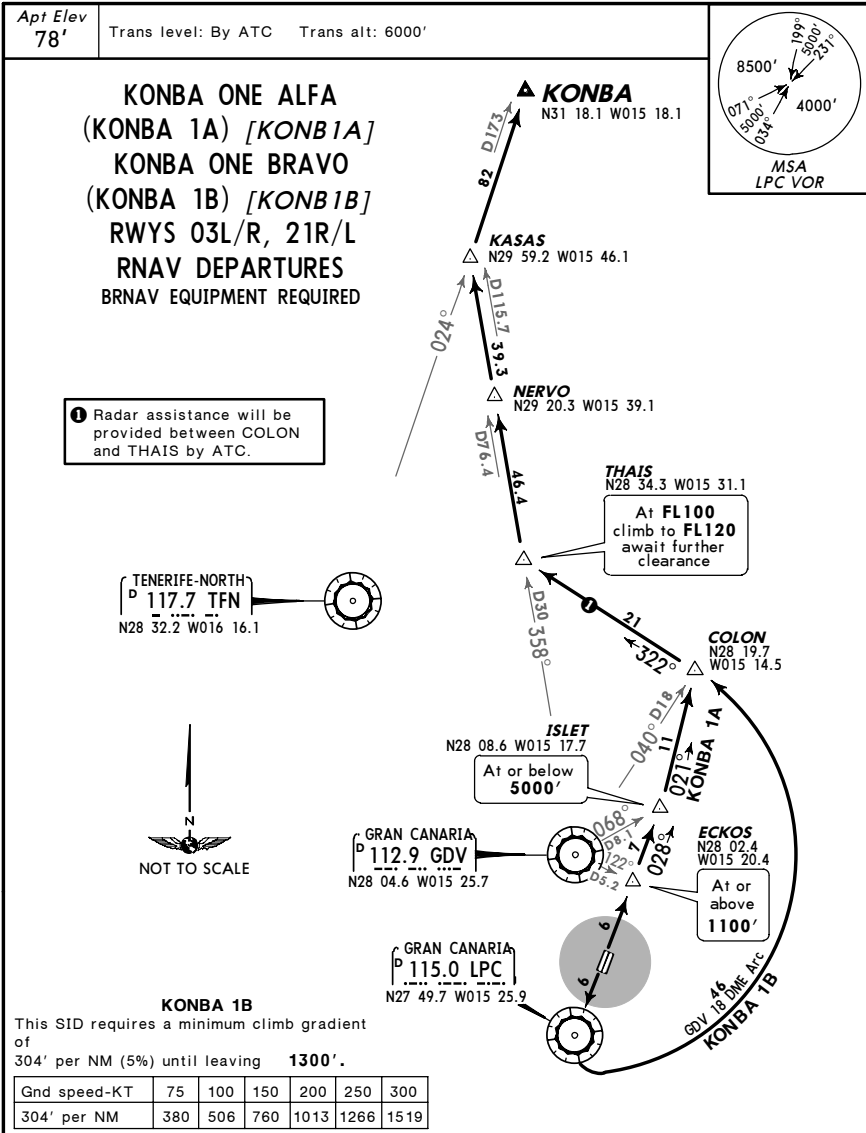
SID	RWY	INITIAL CLIMB
HIE 1A	03L	To ECKOS.
	03R	Turn LEFT in VMC, then to ECKOS.
HIE 1B	21R	To LPC.
	21L	Turn RIGHT in VMC, then to LPC.

SID	ROUTING
HIE 1A	At ECKOS turn RIGHT, intercept GDV R-122 to D23 GDV, turn RIGHT, maintain 3000' until intercepting GDV 26 DME arc, climb to 6000', await further clearance, along arc to DRANO, turn LEFT, intercept 282° bearing to HIE.
HIE 1B	At LPC, LPC R-208 to D8 LPC, turn RIGHT, intercept 282° bearing to HIE. Maintain 6000', await further clearance.

GCLP/LPA  
 GRAN CANARIA

JEPPESEN GRAN CANARIA, CANARY IS  
 13 FEB 04 (10-3D) Eff 19 Feb SID



SID	RWY	INITIAL CLIMB
KONBA 1A	03L	To ECKOS.
KONBA 1A	03R	Turn LEFT in VMC, then to ECKOS.
KONBA 1B	21R	To LPC.
KONBA 1B	21L	Turn RIGHT in VMC, then to LPC.

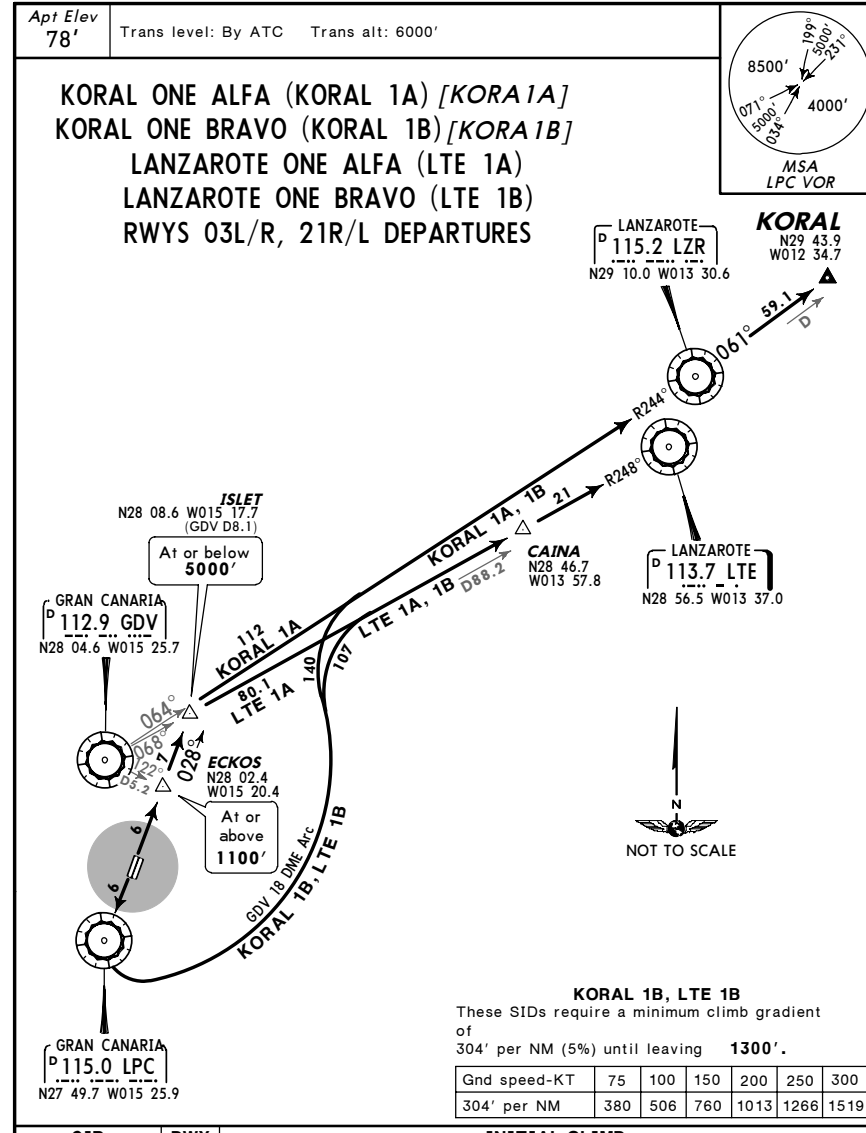
  

SID	ROUTING
KONBA 1A	From ECKOS to ISLET, then to COLON, turn LEFT, 322° track to THAIS, turn RIGHT, maintain FL100 until intercepting GDV R-358, climb to FL120, await further clearance, proceed via NERVO to KASAS, turn RIGHT, intercept TFN R-024 to KONBA.
KONBA 1B	At LPC turn LEFT, along GDV 18 DME arc to COLON, turn LEFT, 322° track to THAIS, turn RIGHT, maintain FL100 until intercepting GDV R-358, climb to FL120, await further clearance, proceed via NERVO to KASAS, turn RIGHT, intercept TFN R-024 to KONBA.

CHANGES: See other side.

GCLP/LPA  
 GRAN CANARIA

JEPPESEN GRAN CANARIA, CANARY IS  
 13 FEB 04 (10-3E) Eff 19 Feb SID



SID	RWY	INITIAL CLIMB
KORAL 1A	03L	To ECKOS.
KORAL 1A	03R	Turn LEFT in VMC, then to ECKOS.
KORAL 1B	21R	To LPC.
KORAL 1B	21L	Turn RIGHT in VMC, then to LPC.

SID	ROUTING
KORAL 1A	From ECKOS to ISLET, turn RIGHT, intercept GDV R-064 to LZR, LZR R-061 to KORAL. Maintain FL100, await further clearance.
KORAL 1B	At LPC turn LEFT, along GDV 18 DME arc, intercept GDV R-064 to LZR, LZR R-061 to KORAL. Maintain 6000', await further clearance.
LTE 1A	From ECKOS to ISLET, turn RIGHT, intercept GDV R-068 via CAINA to LTE. Maintain FL100, await further clearance.
LTE 1B	At LPC turn LEFT, along GDV 18 DME arc, intercept GDV R-068 via CAINA to LTE. Maintain 6000', await further clearance.

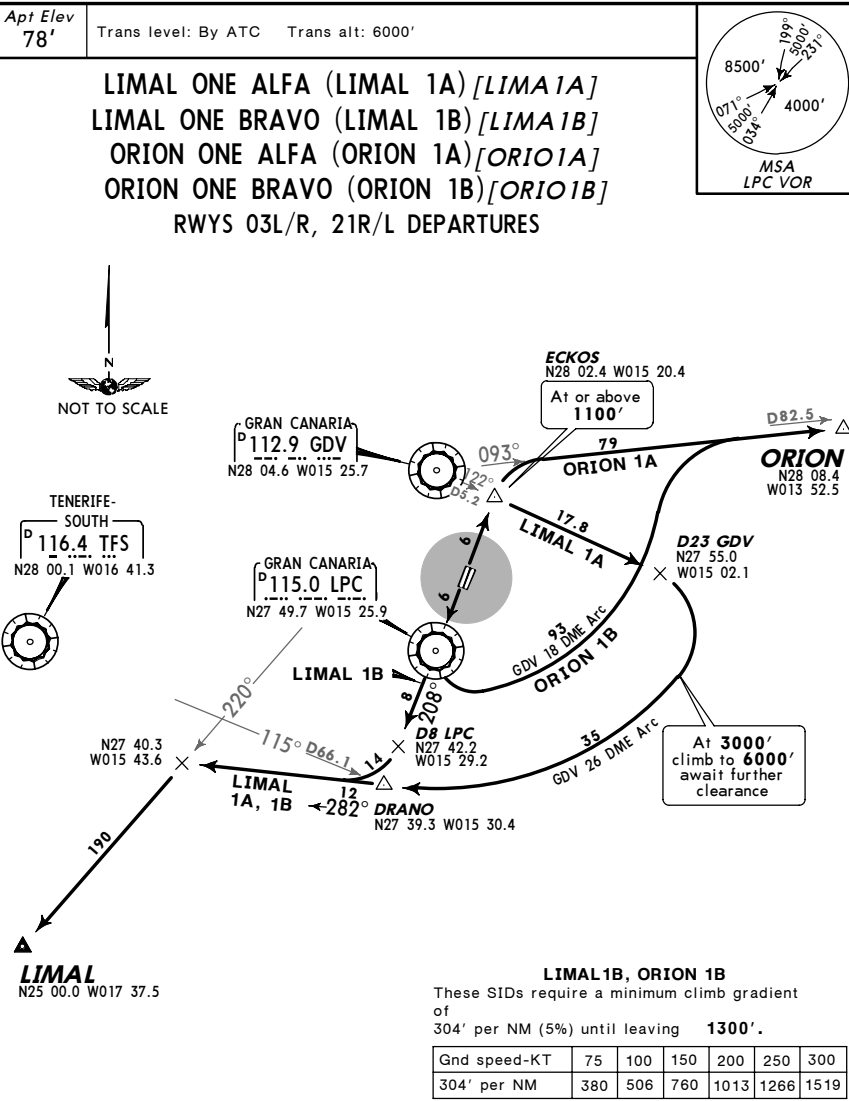
CHANGES: SIDs LT 1A, 1B renamed LTE 1A, 1B & revised.

GCLP/LPA  
 GRAN CANARIA

JEPPESEN GRAN CANARIA, CANARY IS

13 FEB 04 (10-3F) Eff 19 Feb

SID



SID	RWY	INITIAL CLIMB
LIMAL 1A	03L	To ECKOS.
ORION 1A	03R	Turn LEFT in VMC, then to ECKOS.
LIMAL 1B	21R	To LPC.
ORION 1B	21L	Turn RIGHT in VMC, then to LPC.

SID	ROUTING
LIMAL 1A	At ECKOS turn RIGHT, intercept GDV R-122 to D23 GDV, turn RIGHT, maintain 3000' until intercepting GDV 26 DME arc, climb to 6000', await further clearance, along arc to DRANO, 282° track, intercept GDV R-220 to LIMAL.
LIMAL 1B	At LPC, LPC R-208 to D8 LPC, turn RIGHT, intercept GDV R-220 to LIMAL. Maintain 6000', await further clearance.
ORION 1A	At ECKOS turn RIGHT, intercept GDV R-093 to ORION. Maintain 5000', await further clearance.
ORION 1B	At LPC turn LEFT, along GDV 18 DME arc, intercept GDV R-093 to ORION. Maintain 6000', await further clearance.

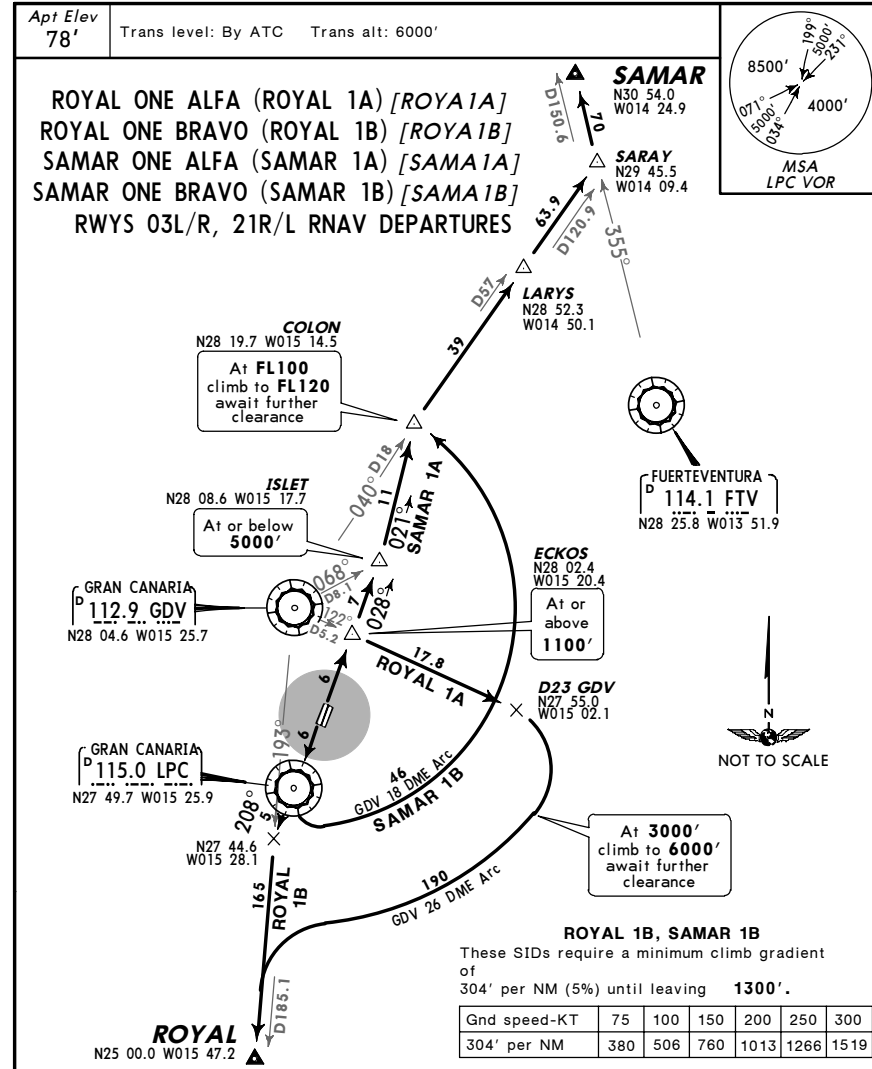
CHANGES: ORION SIDs established; ROYAL SIDs transif; new format. © JEPPESEN SANDERSON, INC., 2004. ALL RIGHTS RESERVED.

GCLP/LPA  
 GRAN CANARIA

JEPPESEN GRAN CANARIA, CANARY IS

13 FEB 04 (10-3G) Eff 19 Feb

SID



SID	RWY	INITIAL CLIMB
ROYAL 1A	03L	To ECKOS.
SAMAR 1A	03R	Turn LEFT in VMC, then to ECKOS.
ROYAL 1B	21R	To LPC.
SAMAR 1B	21L	Turn RIGHT in VMC, then to LPC.

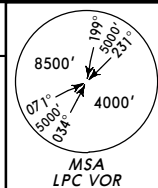
SID	ROUTING
ROYAL 1A	At ECKOS turn RIGHT, intercept GDV R-122 to D23 GDV, turn RIGHT, maintain 3000' until intercepting GDV 26 DME arc, climb to 6000', await further clearance, along arc, intercept GDV R-193 to ROYAL.
ROYAL 1B	At LPC, LPC R-208, intercept GDV R-193 to ROYAL. Maintain 6000', await further clearance.
SAMAR 1A	From ECKOS to ISLET, then to COLON, turn RIGHT, maintain FL100 until intercepting GDV R-040, climb to FL120, await further clearance, proceed via LARYS to SARAY, turn LEFT, intercept FTV R-355 to SAMAR.
SAMAR 1B	At LPC turn LEFT, along GDV 18 DME arc to COLON, turn RIGHT, maintain FL100 until intercepting GDV R-040, climb to FL120, await further clearance, proceed via LARYS to SARAY, turn LEFT, intercept FTV R-355 to SAMAR.

CHANGES: ROYAL SIDs transferred; FTV INS coordinates; new format. © JEPPESEN SANDERSON, INC., 2004. ALL RIGHTS RESERVED.

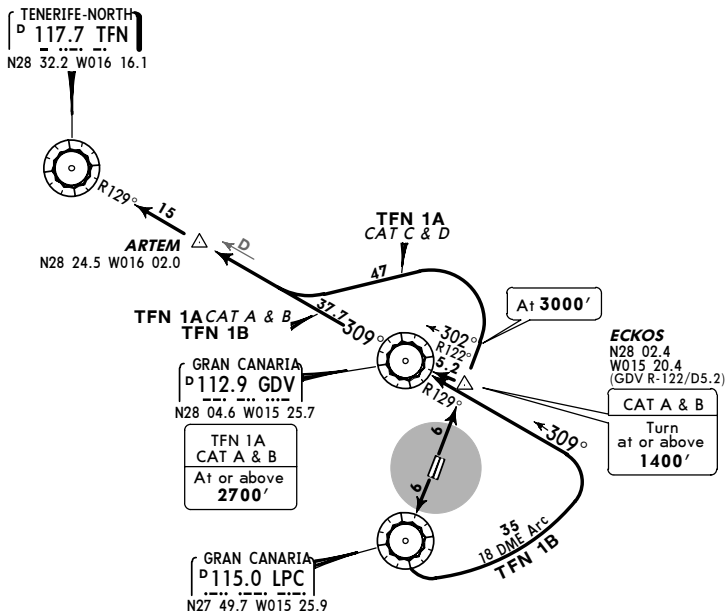
GCLP/LPA  
 GRAN CANARIA

JEPPESEN GRAN CANARIA, CANARY IS  
 19 SEP 03 (10-3H) Eff 2 Oct SID

Apt Elev 78' Trans level: By ATC Trans alt: 6000'



TENERIFE NORTH ONE ALFA (TFN 1A)  
 TENERIFE NORTH ONE BRAVO (TFN 1B)  
 RWYS 03L/R, 21R/L DEPARTURES



These SIDs require minimum climb gradients of

**TFN 1A (CAT A & B)**  
 243' per NM (4%) until leaving **2700'**.  
**TFN 1B**  
 304' per NM (5%) until leaving **1300'**.

Gnd speed-KT	75	100	150	200	250	300
243' per NM	304	405	608	810	1013	1215
304' per NM	380	506	760	1013	1266	1519

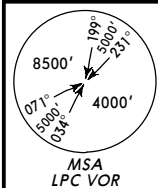
SID	RWY	INITIAL CLIMB
TFN 1A	03L	To ECKOS.
	03R	Turn LEFT in VMC, then join SID from runway 03L.
TFN 1B	21R	To LPC.
	21L	Turn RIGHT in VMC, then join SID from runway 21R.

SID	ROUTING
TFN 1A	<b>CAT A &amp; B:</b> Turn LEFT to GDV, GDV R-309 via ARTEM to TFN. Maintain <b>6000'</b> , await further clearance. <b>CAT C &amp; D:</b> At ECKOS continue climb to <b>3000'</b> , turn LEFT, intercept GDV R-309 via ARTEM to TFN. Maintain <b>6000'</b> , await further clearance.
TFN 1B	Turn LEFT, along GDV 18 DME arc, intercept GDV R-129 inbound to GDV, continue on GDV R-309 via ARTEM to TFN. Maintain <b>6000'</b> , await further clearance.

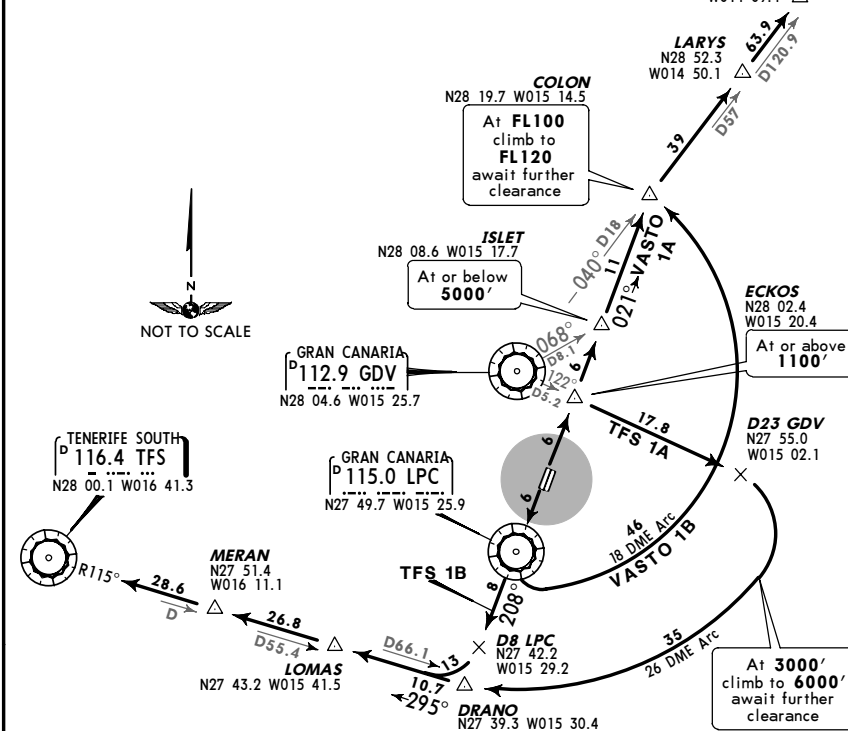
GCLP/LPA  
 GRAN CANARIA

JEPPESEN GRAN CANARIA, CANARY IS  
 19 SEP 03 (10-3J) Eff 2 Oct SID

Apt Elev 78' Trans level: By ATC Trans alt: 6000'



TENERIFE SOUTH ONE ALFA (TFS 1A)  
 TENERIFE SOUTH ONE BRAVO (TFS 1B)  
 VASTO ONE ALFA (VASTO 1A) [VAST1A]  
 VASTO ONE BRAVO (VASTO 1B) [VAST1B]  
 RWYS 03L/R, 21 R/L DEPARTURES



**TFS 1B, VASTO 1B**  
 These SIDs require a minimum climb gradient of 304' per NM (5%) until leaving **1300'**.

Gnd speed-KT	75	100	150	200	250	300
304' per NM	380	506	760	1013	1266	1519

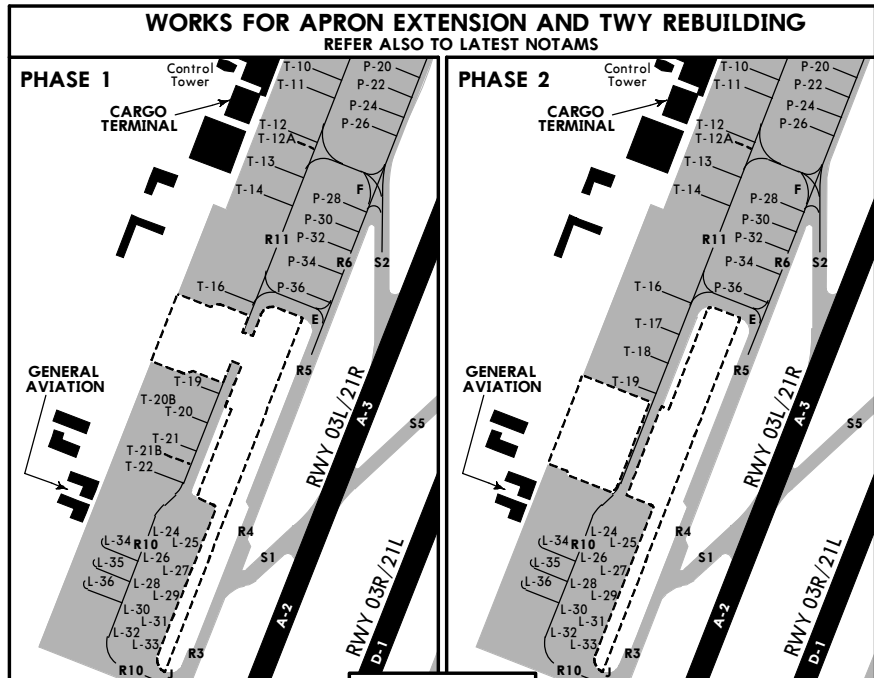
SID	RWY	INITIAL CLIMB
TFS 1A	03L	To ECKOS.
VASTO 1A	03R	Turn LEFT in VMC, then join SID from runway 03L.
TFS 1B	21R	To LPC.
VASTO 1B	21L	Turn RIGHT in VMC, then join SID from runway 21R.

SID	ROUTING
TFS 1A	Turn RIGHT, intercept GDV R-122 to D23 GDV, turn RIGHT, maintain <b>3000'</b> until intercepting GDV 26 DME arc, climb to <b>6000'</b> , await further clearance, along arc to DRANO, intercept TFS R-115 inbound via LOMAS and MERAN to TFS.
TFS 1B	Intercept LPC R-208 to D8 LPC, turn RIGHT, intercept TFS R-115 inbound via LOMAS and MERAN to TFS. Maintain <b>6000'</b> , await further clearance.
VASTO 1A	Via ISLET to COLON, turn RIGHT, maintain <b>FL100</b> until intercepting GDV R-040, climb to <b>FL120</b> , await further clearance, proceed via LARYS and SARAY to VASTO.
VASTO 1B	Turn LEFT, along GDV 18 DME arc to COLON, turn RIGHT, maintain <b>FL100</b> until intercepting GDV R-040, climb to <b>FL120</b> , await further clearance, proceed via LARYS and SARAY to VASTO.



GCLP/LPA

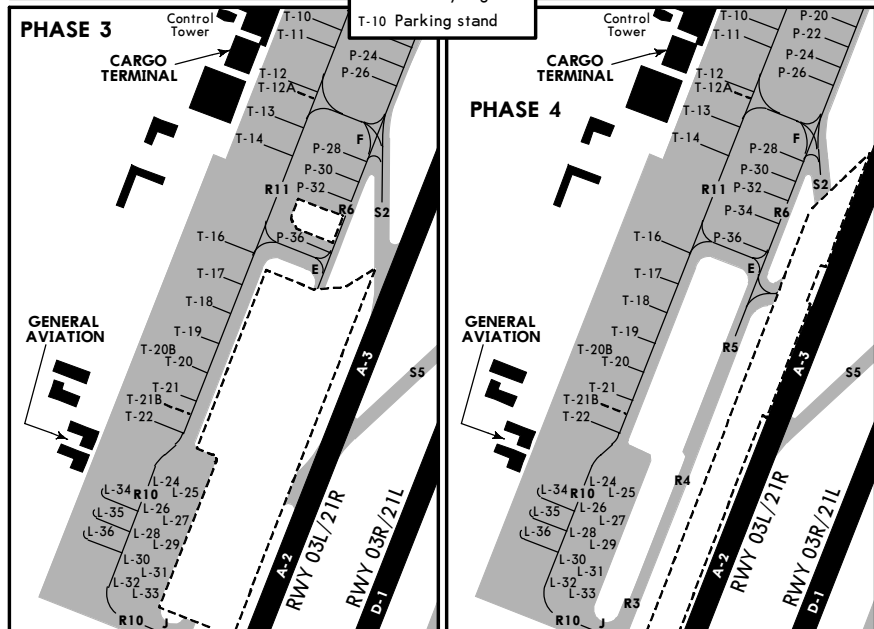
JEPPESEN GRAN CANARIA, CANARY IS  
 11 MAY 07 (10-8) GRAN CANARIA



Phase 1: Twy R10 closed between parking positions T-17 and T-18. Stands T-17 thru T-19 out of service.

LEGEND  
 A-2 Runway segment  
 R5 Taxiway segment  
 T-10 Parking stand

Phase 2: Twy R10 closed between parking positions T-20 and T-22. Stands T-19 thru T-22 out of service.

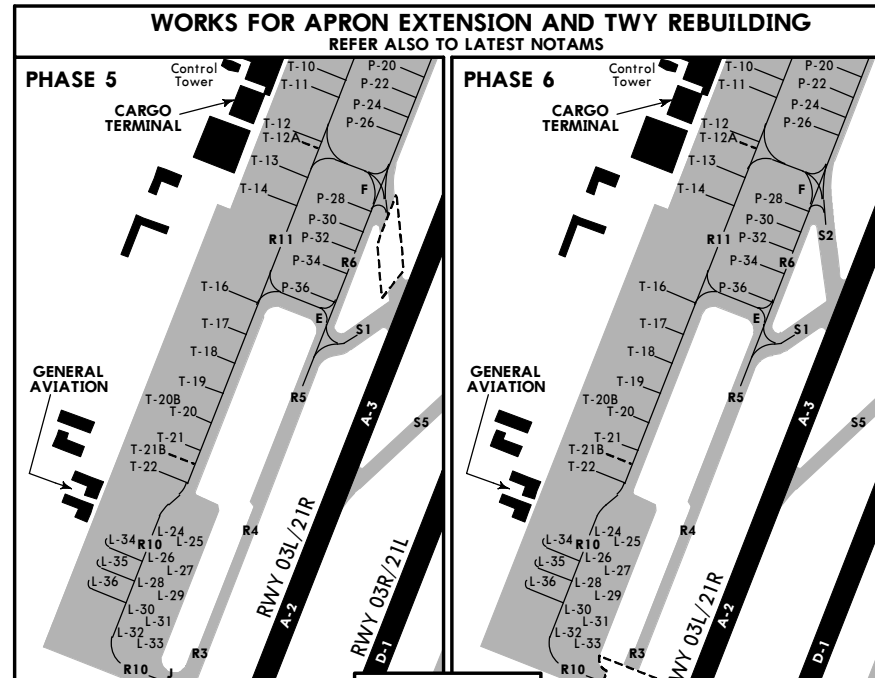


Phase 3: Twys R3, R4, R5 and Gate E to access apron closed. Stands P-34 and P-36 out of service.

Phase 4: Rwy 03L/21R and Twy S2 closed.

GCLP/LPA

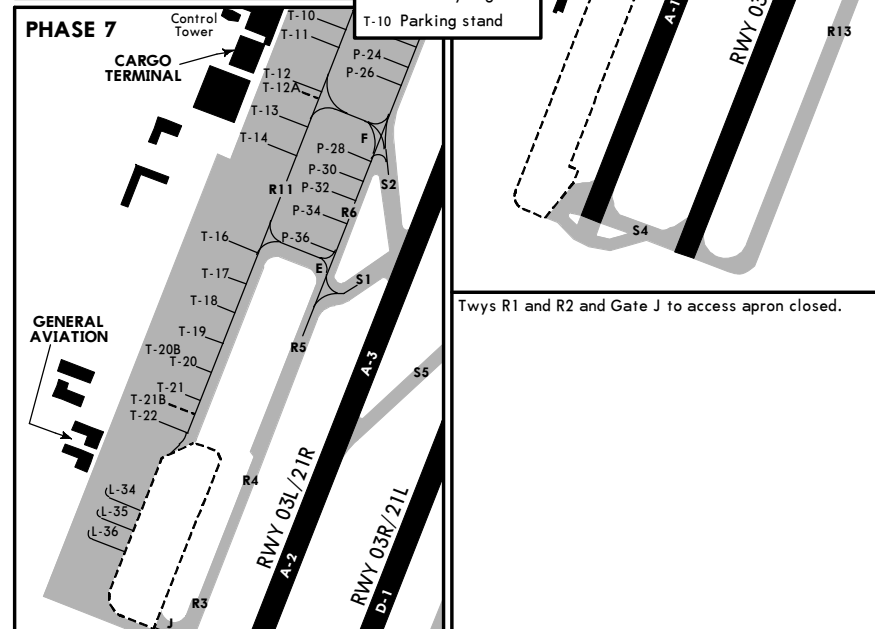
JEPPESEN GRAN CANARIA, CANARY IS  
 11 MAY 07 (10-8A) GRAN CANARIA



Phase 5: Twy S2 closed.

LEGEND  
 A-2 Runway segment  
 R5 Taxiway segment  
 T-10 Parking stand

Phase 6: Twys R1 and R2 and Gate J to access apron closed.



Phase 7: Twy R10 closed between parking positions T-20 and T-22. Stands L-24 thru L-36 and T-22 out of service.

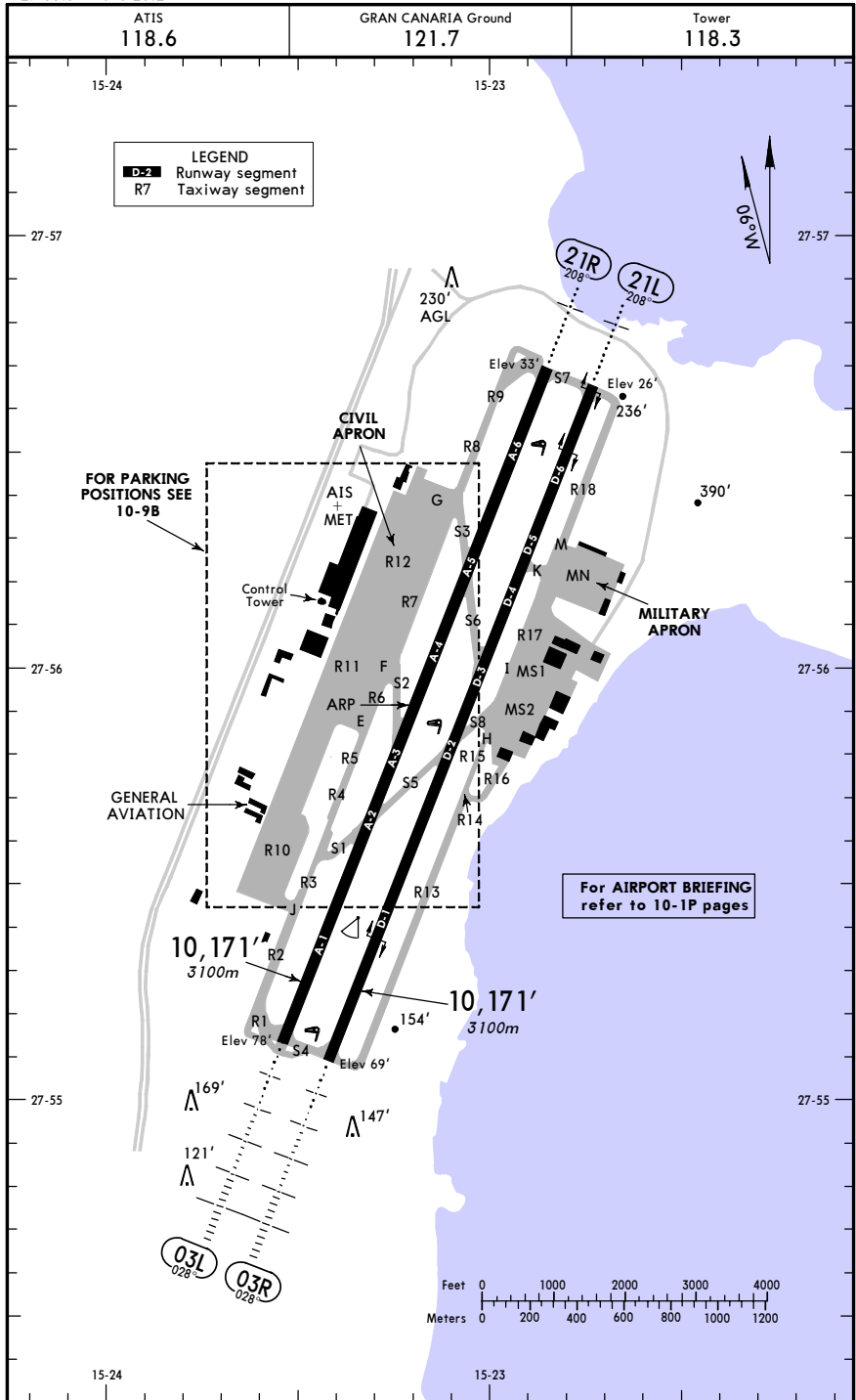
GCLP/LPA

JEPPESEN GRAN CANARIA, CANARY IS

Apt Elev 78'  
 N27 55.9 W015 23.2

22 DEC 06 (10-9)

GRAN CANARIA



GCLP/LPA

JEPPESEN GRAN CANARIA, CANARY IS

22 DEC 06 (10-9A)

GRAN CANARIA

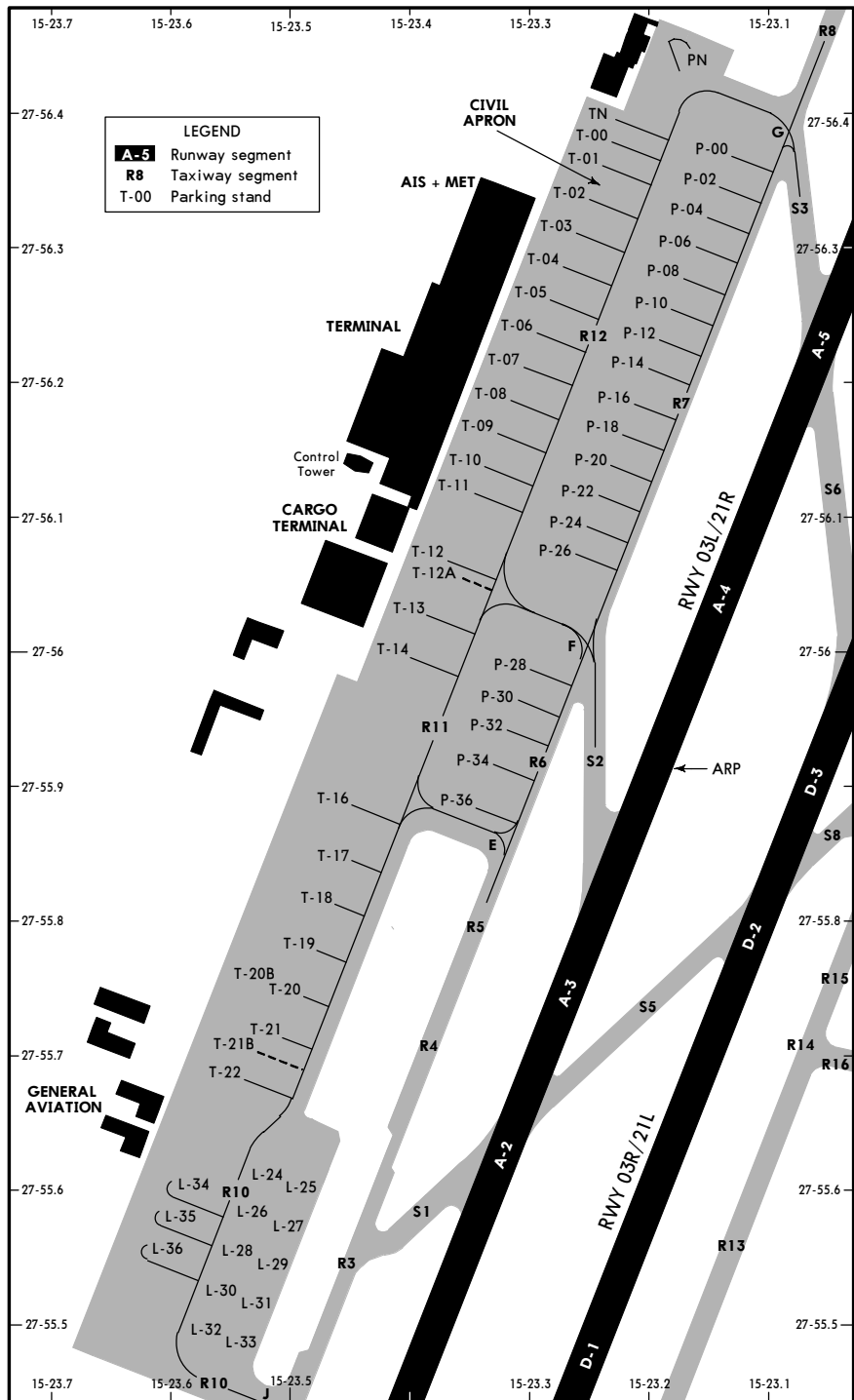
RWY		ADDITIONAL RUNWAY INFORMATION			
		LANDING BEYOND		TAKE-OFF	WIDTH
Threshold	Glide Slope				
03L	HIRL (50m) CL (15m) HIALS REIL PAPI (3.0°) RVR		8858' 2700m		148'
21R	HIRL (50m) CL (15m) ALS REIL PAPI (3.0°)		9276' 2827m		45m
03R	HIRL (50m) CL (15m) HIALS REIL PAPI (3.0°) RVR				148'
21L	HIRL (50m) CL (15m) ALS REIL PAPI (3.0°)				45m

INS COORDINATES

STAND No.	COORDINATES	STAND No.	COORDINATES
L-24 thru L-28	N27 55.6 W015 23.5	P-32, P-34	N27 55.9 W015 23.3
L-29	N27 55.5 W015 23.5	P-36	N27 55.9 W015 23.4
L-30	N27 55.5 W015 23.6	TN, T-00	N27 56.4 W015 23.2
L-31	N27 55.5 W015 23.5	T-01	N27 56.4 W015 23.3
L-32	N27 55.5 W015 23.6	T-02 thru T-05	N27 56.3 W015 23.3
L-33	N27 55.5 W015 23.5	T-06 thru T-09	N27 56.2 W015 23.3
L-34 thru L-36	N27 55.6 W015 23.6	T-10 thru T-12A	N27 56.1 W015 23.4
PN	N27 56.4 W015 23.2	T-13, T-14	N27 56.0 W015 23.4
P-00	N27 56.4 W015 23.1	T-16, T-17	N27 55.9 W015 23.5
P-02	N27 56.4 W015 23.2	T-18 thru T-20B	N27 55.8 W015 23.5
P-04 thru P-10	N27 56.3 W015 23.2	T-21, T-21B	N27 55.7 W015 23.5
P-12 thru P-18	N27 56.2 W015 23.2	T-22	N27 55.7 W015 23.6
P-20	N27 56.1 W015 23.2		
P-22 thru P-26	N27 56.1 W015 23.3		
P-28, P-30	N27 56.0 W015 23.3		

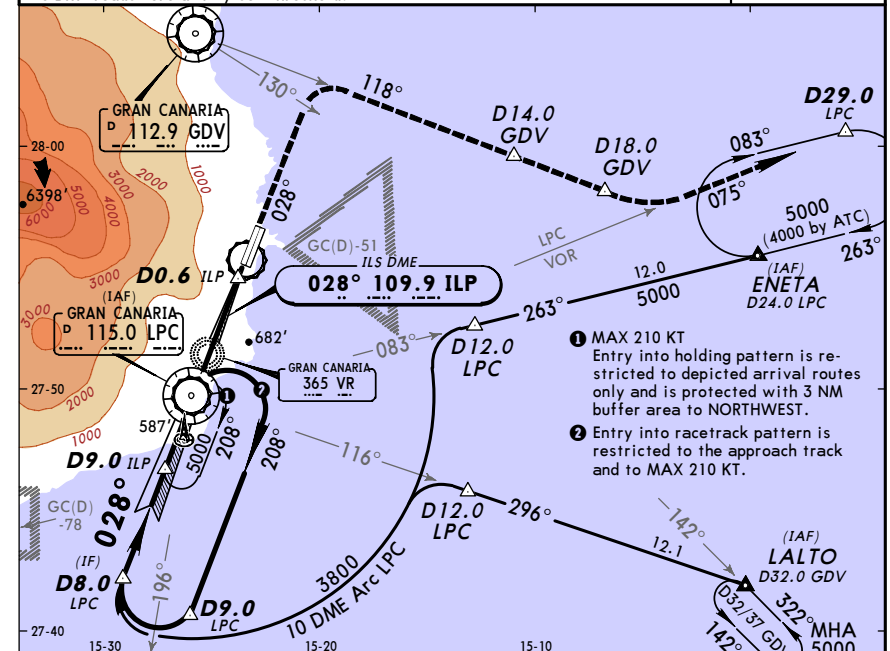
JAR-OPS	TAKE-OFF I		
All Rwy's			
LVP must be in Force			
RL & CL	RCLM (DAY only) or RL	RCLM (DAY only) or RL	NIL (DAY only)
A			
B	200m	250m	400m
C			500m
D	250m	300m	

GCLP/LPA **JEPPESEN GRAN CANARIA, CANARY IS**  
 22 DEC 06 (10-9B) GRAN CANARIA

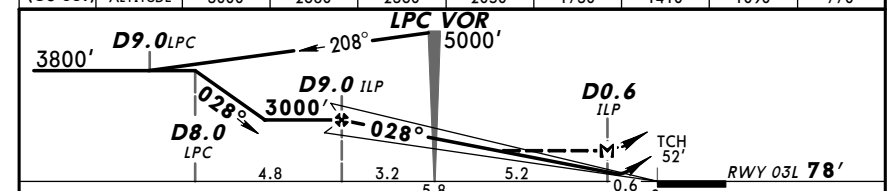


GCLP/LPA **JEPPESEN GRAN CANARIA, CANARY IS**  
 10 NOV 06 (1-1) **VOR DME ILS DME Rwy 03L**  
 Eff 23 Nov

ATIS		GRAN CANARIA Approach (R)			GRAN CANARIA Tower		Ground	
118.6		124.3	120.9	121.3	118.3		121.7	
LOC ILP	Final Apch Crs	GS	ILS DA(H)	Apt Elev	RWY 78'			
109.9	028°	D9.0 ILP 3000' (2922')	Refer to Minimums	78'				



LOC	ILP DME	9.0	8.0	7.0	6.0	5.0	4.0	3.0	2.0
(GS out)	ALTITUDE	3000'	2680'	2360'	2050'	1730'	1410'	1090'	770'



Gnd speed-Kts	70	90	100	120	140	160	HIALS REIL PAPI PAPI	R-130 GDV
ILS GS 3.00° or	377	484	538	646	753	861		
LOC Descent Gradient 5.2%								

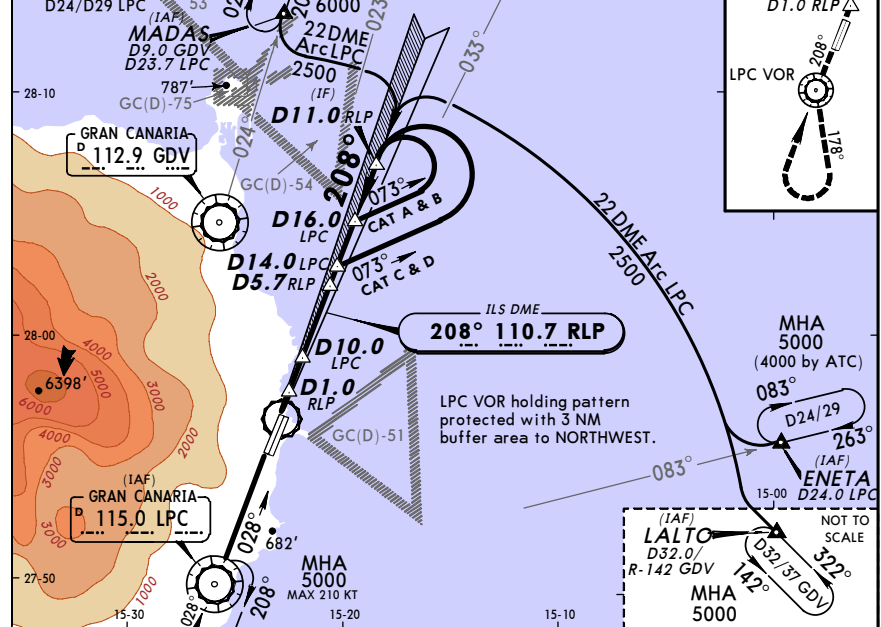
<b>JAR-OPS</b>				<b>STRAIGHT-IN LANDING RWY 03L</b>		<b>LOC (GS out) &amp; SIDESTEP TO RWY 03R</b>		<b>CIRCLE-TO-LAND</b>	
DA(H) A: 320' (242') C: 340' (262')				M: 350' (272')		MDA(H) 730' (652')		Not authorized West of airport	
FULL		ALS out		ALS out		Max Kts		MDA(H) VIS	
A	RVR 600m	RVR 1000m	RVR 1200m	RVR 1500m	100	980' (902')	1500m		
B			RVR 1400m	RVR 2000m	135	980' (902')	1600m		
C	RVR 650m	RVR 1200m			180	1150' (1072')	2400m		
D			RVR 1800m		205	1150' (1072')	3600m		

**GCLP/LPA GRAN CANARIA**  
 GRAN CANARIA  
 10 NOV 06 (11-2) **JEPPESEN GRAN CANARIA, CANARY IS**  
 VOR DME ILS DME Rwy 21R  
 Eff 23 Nov

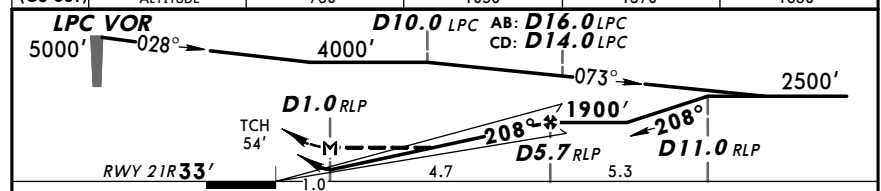
ATIS		GRAN CANARIA Approach (R)			GRAN CANARIA Tower		Ground	
118.6		124.3	120.9	121.3	118.3		121.7	
LOC RLP	Final Apch Crs	GS	ILS DA(H)	Apt Elev	78'	8500'		
110.7	208°	D5.7 RLP	Refer to Minimums	RWY	33'	3000'		

MISSED APCH: Climb on 208° to LPC VOR, proceed on R-178 LPC to 4500', then turn RIGHT to LPC VOR climbing to 5000' and join holding.

Alt Set: hPa Rwy Elev: 1 hPa Trans level: By ATC Trans alt: 6000'



LOC	RLP DME	2.0	3.0	4.0	5.0
(GS out)	ALTITUDE	730'	1050'	1370'	1680'



Gnd speed-Kts	70	90	100	120	140	160	ALS REIL PAPI	LPC 115.0
ILS GS 3.00° or LOC Descent Gradient 5.2%	377	484	538	646	753	861		

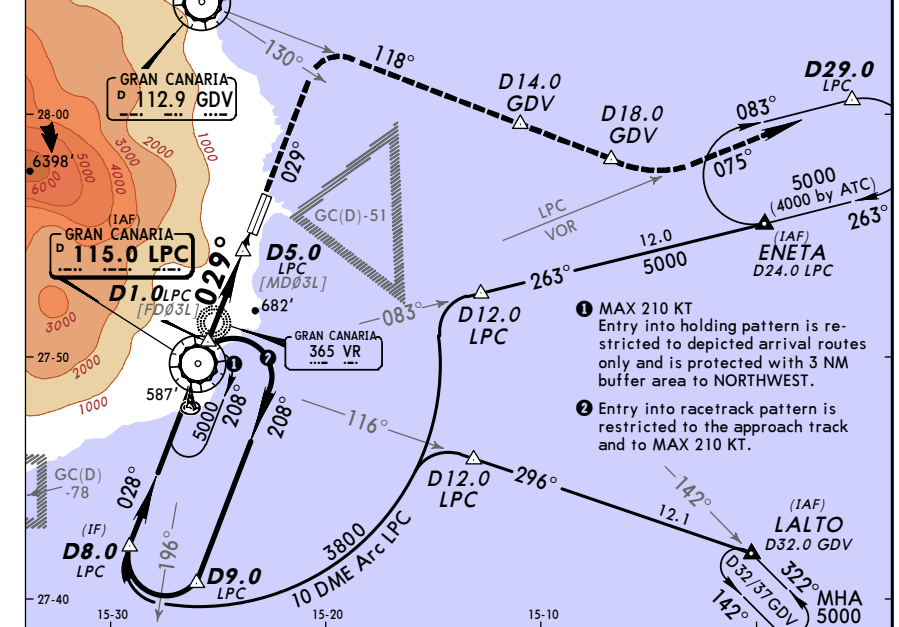
JAR-OPS		STRAIGHT-IN LANDING RWY 21R		CIRCLE-TO-LAND	
ILS DA(H) A: 277'(244') C: 297'(264') B: 289'(256') D: 307'(274')		LOC (GS out) & SIDESTEP TO RWY 21L MDA(H) 500'(467')		Not authorized West of airport	
A	RVR 800m	RVR 1000m	RVR 1500m		Max Kts 100
B					135
C	RVR 900m	RVR 1200m	RVR 1800m	RVR 2000m	180
D			RVR 2000m		205

**GCLP/LPA GRAN CANARIA**  
 GRAN CANARIA  
 10 NOV 06 (13-1) **JEPPESEN GRAN CANARIA, CANARY IS**  
 VOR DME Rwy 03L  
 Eff 23 Nov

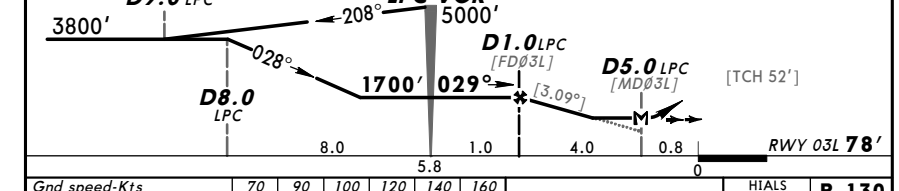
ATIS		GRAN CANARIA Approach (R)			GRAN CANARIA Tower		Ground	
118.6		124.3	120.9	121.3	118.3		121.7	
VOR LPC	Final Apch Crs	Minimum Alt	MDA(H)	Apt Elev	78'	8500'		
115.0	029°	D1.0 LPC	1100'(1022')	RWY	78'	3000'		

MISSED APCH: Climb on R-029 LPC until R-130 GDV. Turn RIGHT (MAX 185 KT) to intercept R-118 GDV. Maintain 3000' until D14.0 GDV. At D18.0 GDV turn LEFT to intercept R-075 LPC direct to D29.0 LPC climbing to 4000' and join holding.

Alt Set: hPa Rwy Elev: 3 hPa Trans level: By ATC Trans alt: 6000'



LOC	RLP DME	2.0	3.0	4.0	5.0
(GS out)	ALTITUDE	730'	1050'	1370'	1680'



Gnd speed-Kts	70	90	100	120	140	160	ALS REIL PAPI	LPC 115.0
Descent Gradient 5.39% or Descent angle [3.09°]	383	492	547	656	765	875		

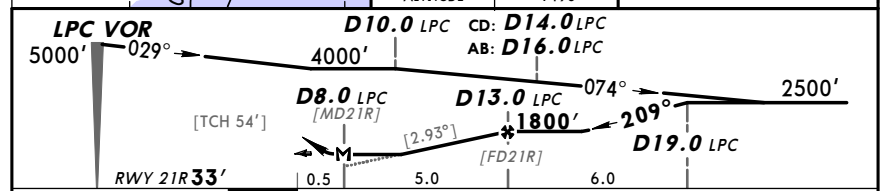
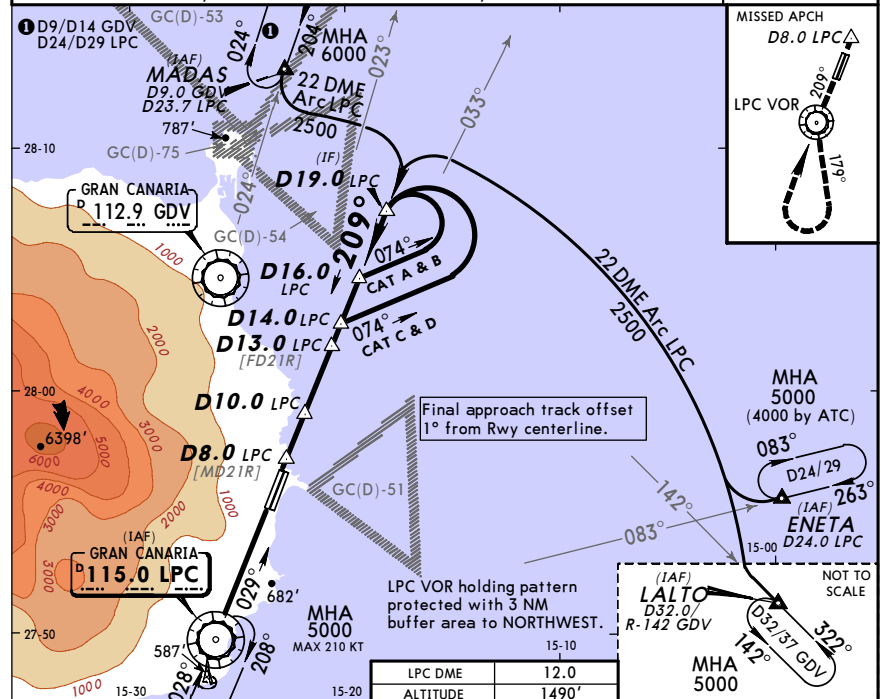
JAR-OPS		STRAIGHT-IN LANDING RWY 03L		CIRCLE-TO-LAND	
VOR DME & SIDESTEP TO RWY 03R MDA(H) 1100'(1022')		Not authorized West of airport		Not authorized West of airport	
A	RVR 1200m	RVR 1500m		Max Kts 100	1300'(1222')
B					135
C	RVR 1400m	RVR 2000m		180	1660'(1582')
D			RVR 2000m		205

**GCLP/LPA GRAN CANARIA**  
 10 NOV 06 (3-2) Eff 23 Nov  
**JEPPESEN GRAN CANARIA, CANARY IS**  
**VOR DME Rwy 21R**

ATIS 118.6		GRAN CANARIA Approach (R) 124.3 120.9 121.3			GRAN CANARIA Tower 118.3		Ground 121.7	
VOR LPC 115.0	Final Aptch Crs 209°	Minimum Alt D13.0 LPC 1800' (1767')	MDA(H) 1200' (1167')	Apt Elev 78'	RWY 33'			

**MISSED APCH:** Climb on R-029 LPC to LPC VOR, proceed on R-179 LPC to 4500', then turn RIGHT to LPC VOR climbing to 5000' and join holding.

Alt Set: hPa Rwy Elev: 1 hPa Trans level: By ATC Trans alt: 6000' MSA LPC VOR



Gnd speed-Kts	70	90	100	120	140	160	ALS	LPC
Descent Gradient 5.11% or Descent angle [2.93°]	363	466	518	622	726	829	REIL PAPI · PAPI	115.0
MAP at D8.0 LPC								

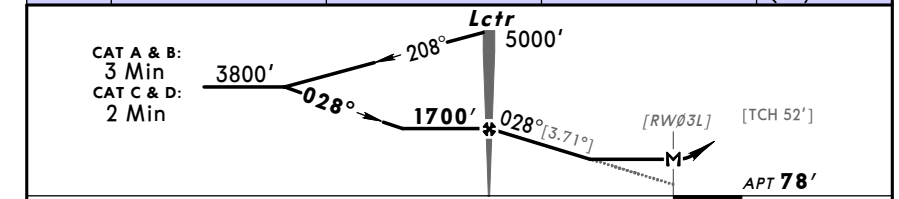
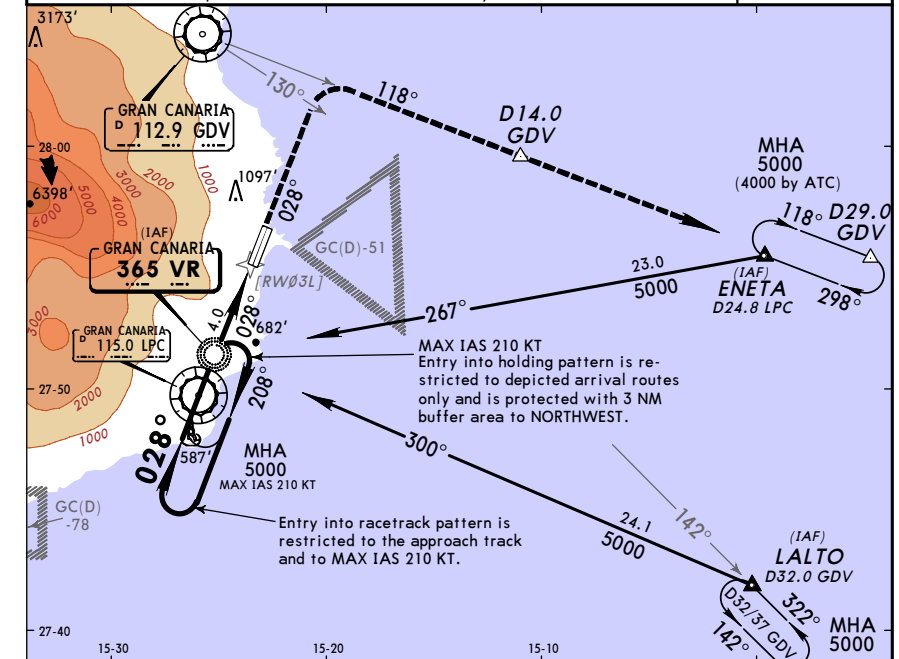
JAR-OPS		STRAIGHT-IN LANDING RWY 21R		CIRCLE-TO-LAND	
		VOR DME & SIDESTEP TO RWY 21L		Not authorized West of airport	
		MDA(H) 1200' (1167')			
		ALS out	Max Kts	MDA(H)	VIS
A	RVR 1500m		100	1500' (1422')	1500m
B	RVR 1500m		135	1500' (1422')	1600m
C	RVR 1800m		180	1540' (1462')	2400m
D	RVR 2000m	RVR 2000m	205	1540' (1462')	3600m

**GCLP/LPA GRAN CANARIA**  
 18 MAR 05 (16-1)  
**JEPPESEN GRAN CANARIA, CANARY IS**  
**NDB Rwy 03L**

ATIS 118.6		GRAN CANARIA Approach (R) 124.3 120.9 121.3			GRAN CANARIA Tower 118.3		Ground 121.7	
Lctr VR 365	Final Aptch Crs 028°	Minimum Alt Lctr 1700' (1622')	MDA(H) 1280' (1202')	Apt Elev 78'	RWY 03L			

**MISSED APCH:** Climb STRAIGHT AHEAD to R-130 GDV. Turn RIGHT (MAX IAS 185 KT) to intercept R-118 GDV. Maintain 3000' until D14.0 GDV. Climb to 4000' and join holding.

Alt Set: hPa Apt Elev: 3 hPa Trans level: By ATC Trans alt: 6000' MSA VR Lctr

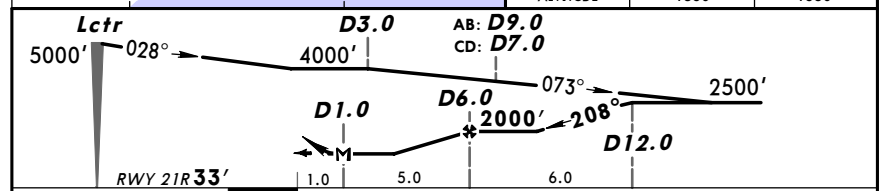
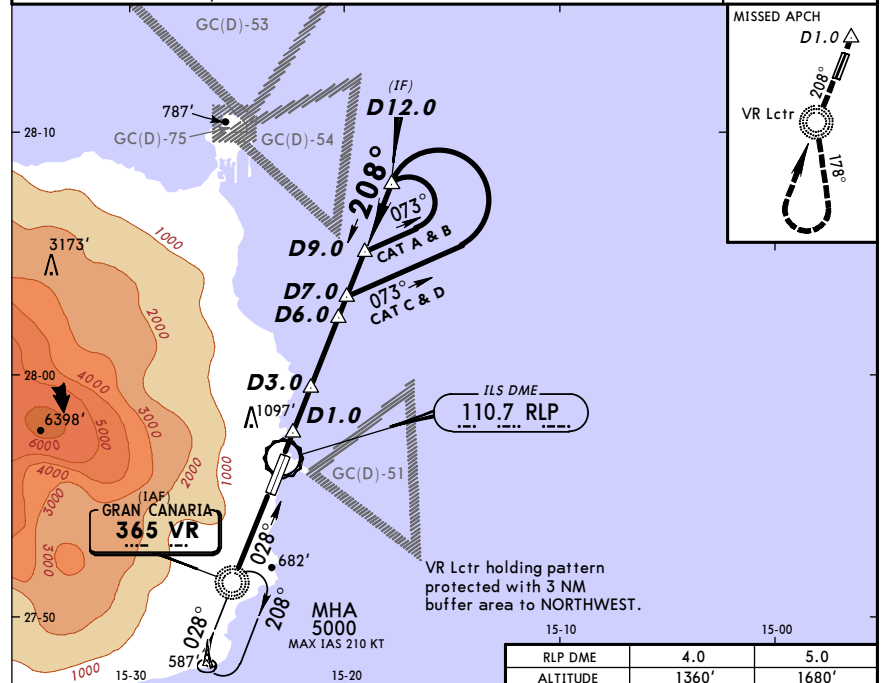


Gnd speed-Kts	70	90	100	120	140	160	HIALS	R-130
Descent Gradient 6.48% or Descent angle [3.71°]	460	591	657	788	919	1051	REIL PAPI · PAPI	GDV
Lctr to MAP	4.0	3:26	2:40	2:24	2:00	1:43	1:30	

JAR-OPS		STRAIGHT-IN LANDING RWY 03L		CIRCLE-TO-LAND	
		NDB & SIDESTEP TO RWY 03R		Not authorized West of airport	
		MDA(H) 1280' (1202')			
		ALS out	Max Kts	MDA(H)	VIS
A	RVR 1200m		100	1280' (1202')	1500m
B	RVR 1400m	RVR 1500m	135	1550' (1472')	1600m
C			180	1650' (1572')	2400m
D			205	1650' (1572')	3600m

**GCLP/LPA GRAN CANARIA** 18 MAR 05 (16-2) **JEPPESEN GRAN CANARIA, CANARY IS**  
**NDB DME Rwy 21R**

ATIS 118.6		GRAN CANARIA Approach (R) 124.3 120.9 121.3		GRAN CANARIA Tower 118.3		Ground 121.7	
Lctr VR <b>365</b>	Final Apch Crs <b>208°</b>	Minimum Alt <b>D6.0</b> 2000' (1967')	MDA(H) <b>1300'</b> (1267')	Apt Elev 78'	RWY <b>33'</b>		
MISSED APCH: Climb STRAIGHT AHEAD to Lctr, proceed on 178° from Lctr to 4500', then turn RIGHT to Lctr climbing to 5000' and join holding.							
Alt Set: hPa Rwy Elev: 1 hPa ILS DME reads zero at rwy 21R threshold.				Trans level: By ATC Trans alt: 6000'		MSA VR Lctr	



Gnd speed-Kts	70	90	100	120	140	160	ALS REL PAPI : PAPI VR <b>365</b>
Descent Gradient 5.3%	376	483	537	644	751	859	
MAP at D1.0							

<b>JAR-OPS</b>		STRAIGHT-IN LANDING RWY 21R NDB DME & SIDESTEP TO RWY 21L MDA(H) <b>1300'</b> (1267')		CIRCLE-TO-LAND Not authorized West of airport	
		ALS out	Max Kts	MDA(H)	VIS
A	RVR 1500m		100	1500' (1422')	1500m
B	RVR 1500m		135	1500' (1422')	1600m
C	RVR 1800m	RVR 2000m	180	1540' (1462')	2400m
D	RVR 2000m		205	1540' (1462')	3600m