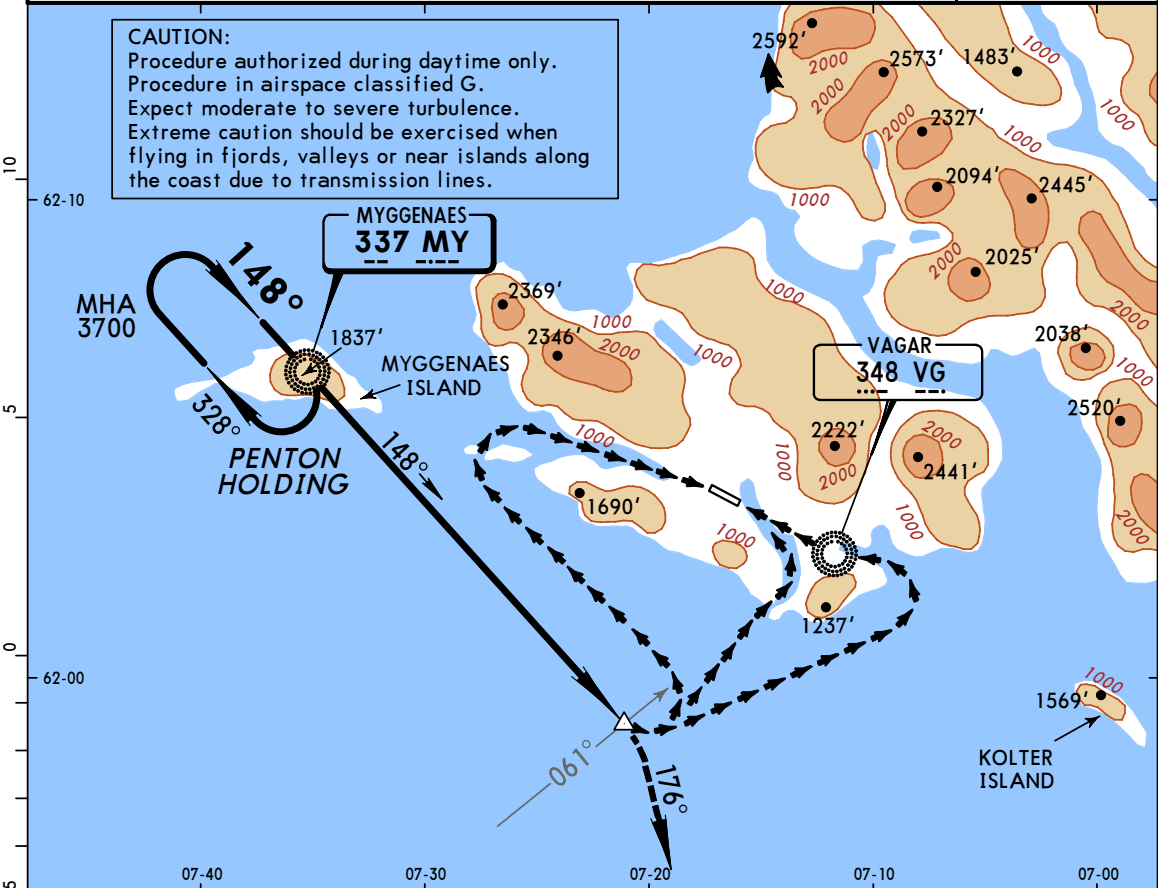


EKVG
VAGAR

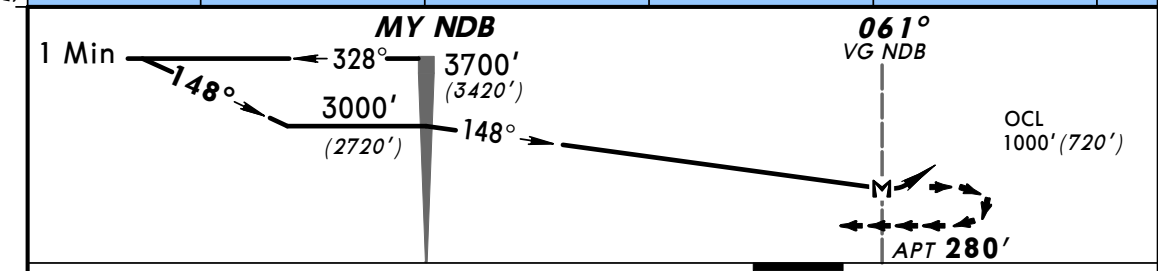
JEPPESEN
30 NOV 01 (16-1)

CAT **VAGAR, FAROE IS**
A, B & C
CLOUD BREAK PROCEDURE **MY NDB**

*VAGAR AFIS below FL 100 within 25 NM 124.85				
NDB MY 337	Final Apch Crs 148°	Minimum Alt No FAF	MDA(H) 1000' (720')	Apt Elev 280'
MISSED APCH: Turn RIGHT to 176° climbing to 3700' , then turn RIGHT to join PENTON holding.				
Alt Set: hPa Apt Elev: 10 hPa Trans level: By ATC Trans alt: 7500' (7220')				MSA MY NDB



CAUTION:
Procedure authorized during daytime only.
Procedure in airspace classified G.
Expect moderate to severe turbulence.
Extreme caution should be exercised when flying in fjords, valleys or near islands along the coast due to transmission lines.



	HIALS PAPI PAPI	3700'	176°	
MAP at 061° VG NDB				

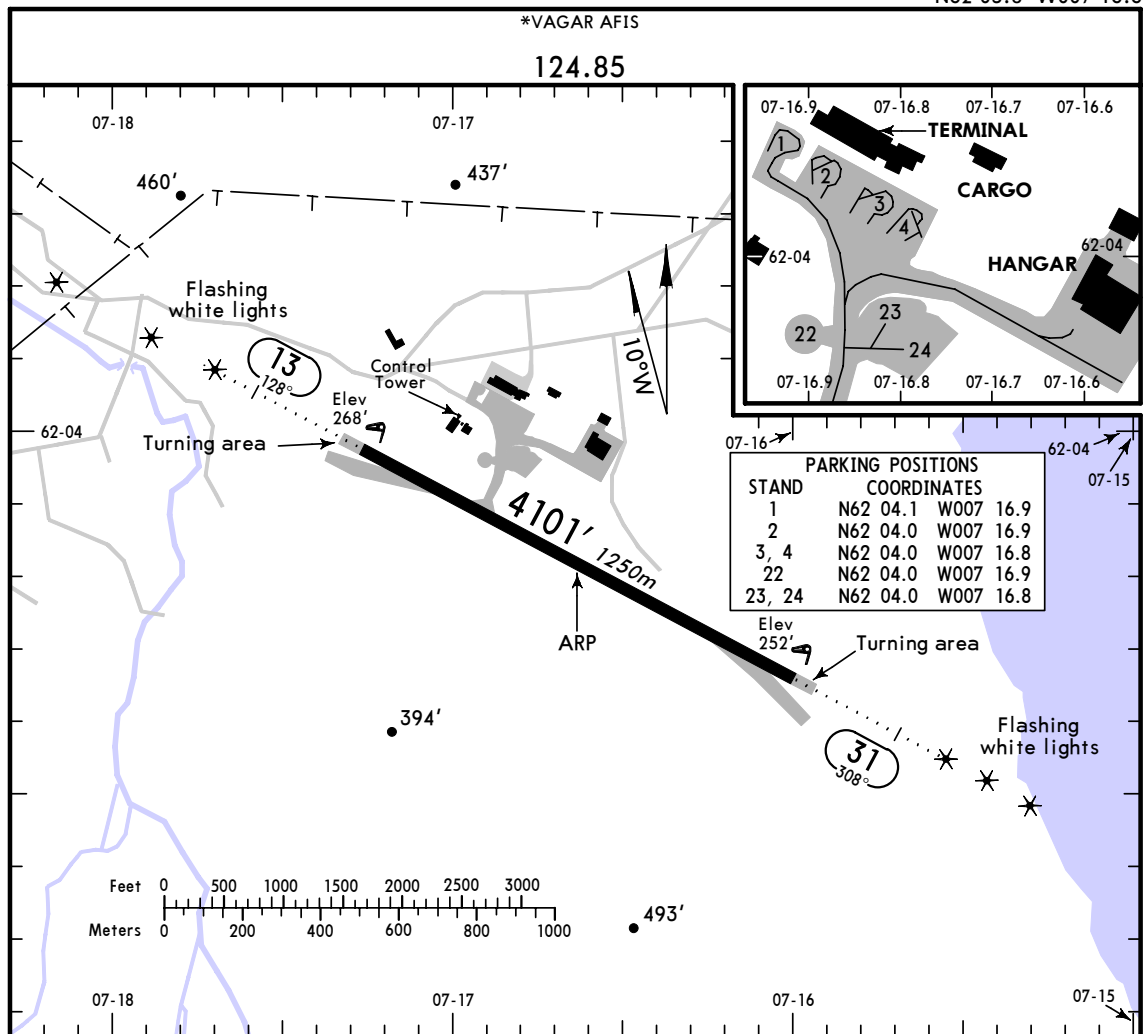
JAR-OPS		CEILING REQUIRED		CIRCLE-TO-LAND	
		DAY		NIGHT	
		MDA(H) — CEIL-VIS			
A					
B		1000' (720') 700'- 800m		NA	
C					
D		NOT APPLICABLE			

EKVG/FAE
Apt Elev **280'**

JEPPESEN

VAGAR, FAROE IS
VAGAR
N62 03.8 W007 16.6

12 SEP 03 **(11-1)**



ADDITIONAL RUNWAY INFORMATION

RWY		USABLE LENGTHS			WIDTH
		Threshold	Glide Slope	TAKE-OFF	
13	HIRL HIALS ① PAPI (3.15°) ② grooved				98'
31	HIRL HIALS PAPI (3.50°) ② grooved				30m

① PAPI Rwy 13: Sufficient terrain clearance only when close to LOC course.

② Rwy 13/31 grooved over a length of 3865' (1178m) beginning 118' (36m) inwards from threshold 31.

EMERGENCY TURN OFFS:

Close to rwy 13 and rwy 31 (left or right according to rwy in use) areas with broken stones have been established for emergency turn offs. Initially the thickness of the layer is 15cm gradually rising to 45cm. The length of the stoned covered area is 492'/150m. Damage to acft using the areas may be expected.

JAR-OPS

	TAKE-OFF	
	IMC ① Rwy 13	VMC All Rwys
	DAY	NIGHT
A		
B	500m	700' - 8000m
C		2000' - ②
D	NOT APPLICABLE	

① No ceiling required for acft able to operate above 3.8% take-off obstacle free surface.

② The surrounding terrain must be clearly visible in the take-off sector and:

For RWY 13: the island Kolter must be clearly visible.

For RWY 31: the island Myggenaes must be clearly visible.